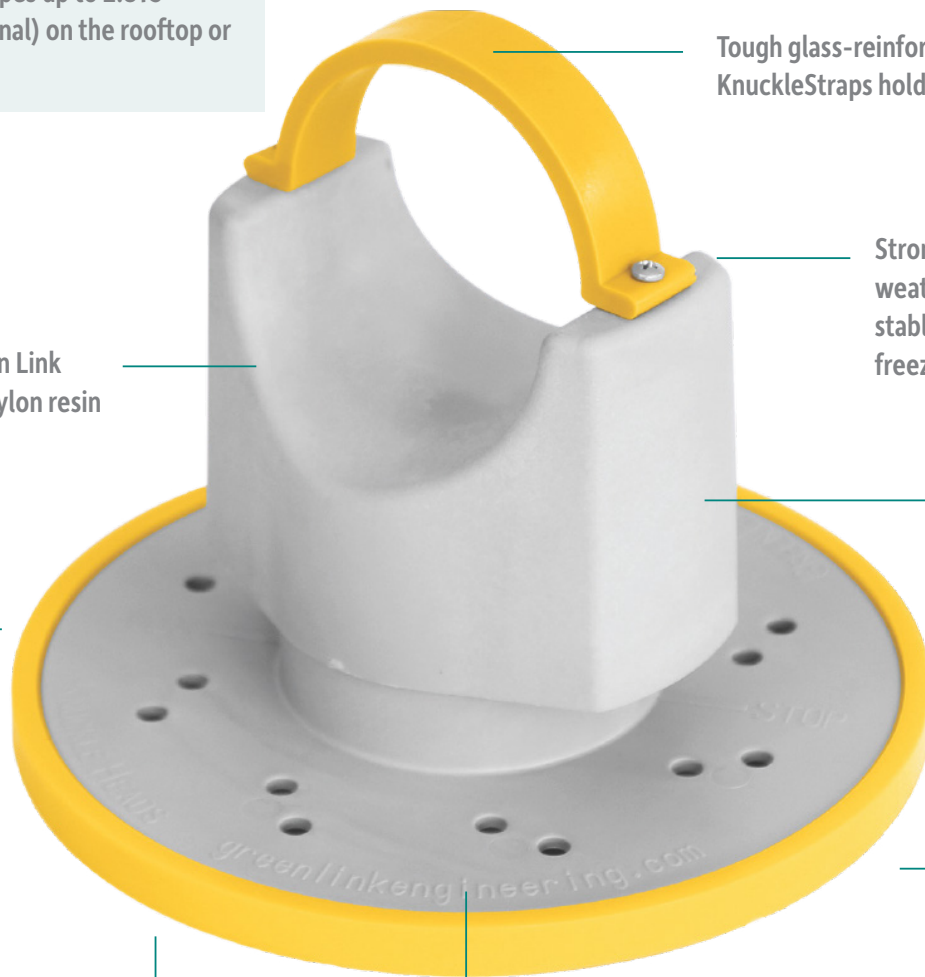




KnuckleHead

Heavy Pipe Support System

KnuckleHead Heavy Pipe Supports are designed to securely accommodate pipes up to 2.875" outside diameter (2.5" nominal) on the rooftop or ground.



Tough glass-reinforced nylon KnuckleStraps hold pipes in place

Strong, tough weatherproof, UV stable, impervious to freeze-thaw cycles

Height-adjustable by rotating head — height ranges from 2.5" - 3.5" elevation to support point

Bases feature four holes for mechanical attachment

Molded from Green Link glass-reinforced nylon resin

Each KnuckleHead can support up to 600 lbs

Matte-finish nylon allows bonding with adhesive

KnuckleHead Bases can be loose laid, mechanically attached and/or bonded with GreenLink Adhesive/Sealant

GREEN LINK
ENGINEERING SUSTAINABILITY



Made in U.S.A.

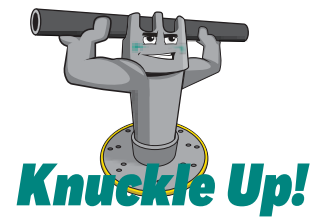
888.672.9897 | www.greenlinkengineering.com
5519 East Cork Street, Kalamazoo, MI 49048 USA

Original design, engineered from the ground up with the contractor in mind, featuring innovative Green Link technology. All made in the U.S.A.

Contractor Driven!

KnuckleHead

Heavy Pipe Support System



KnuckleHead Heavy Pipe Supports are designed for a wide variety of roof and ground applications including natural gas, water and other types of pipelines up to 2.875 inches outside diameter (2.5 inches nominal). Each Knucklehead can support up to 600 pounds. Units can be spaced evenly to distribute the load of the heaviest equipment and pipes. KnuckleHead extensions are available for raising roof-mounted pipes and equipment to higher elevations up to 18 inches. Heavy Pipe supports are lightweight, so they add little to total roof load, preventing low points and depressions that invite ponding water and ice build-up.

KIT CONTENTS

Bases

KnuckleHead Bases are composed of military-grade reinforced nylon which is strong, durable and weatherproof. Each base can support 600 pounds and features a vertical steel bolt for mounting the head, and four holes in the center for accepting mechanical fasteners for attachment.

Two base designs are available. The standard Universal Base features a 7-inch diameter and 38 square inches of surface area. The Big Base features the standard Universal Base over-molded in the center of a larger polymer component with a 12-inch diameter and 113.1 square inches of surface area. The Big Base provides more stability at heights over 12 inches, for example, when using extensions to elevate pipelines. It also provides greater load distribution, reducing point loading on the roof resulting from heavier equipment. The Big Base includes a tough, weatherproof, slip-resistant KnucklePad, which is molded onto the base. Compatible with all roof membranes including PVC, and tinted "safety yellow," this custom-engineered polymer pad protects the roof membrane, eliminating the need for slip sheets.



INSTALLATION

The bases can be installed free-standing or attached. The Universal Base can be attached by driving screws through the four holes in its center directly into the roof deck. This secures the installation. Applying Green Link Adhesive/Sealant to the KnuckleHead Base further strengthens the installation. When adhesive is used, it should be applied across the bottom of the base and on each screw head to prevent roof leaks caused by penetrations. The base features 16 holes, allowing adhesive to squeeze out as the base is pressed onto the roof surface. This creates "adhesive rivets" which strengthen the bond.

The Big Base can also be attached, but in most cases, attachment is unnecessary because the larger surface area provides sufficient stability.

When the Universal Base is free-standing, KnucklePads can be placed on the bases to protect the roof membrane and reduce movement resulting from equipment vibration and wind. Typically, ground installations are free standing on a concrete slab. Applying Green Link Adhesive/Sealant is optional for securing ground installations.

FEATURES

Protection

Heavy Pipe KnuckleHeads prevent damage to the membrane caused by ponding water, wind, ice, flying debris or seismic events and protect the integrity of roof-mounted structures and equipment.

Leveling

Because HVAC equipment and pipelines must be perfectly level to perform optimally, Heavy Pipe KnuckleHeads can be rotated to adjust height within a 1-inch range.

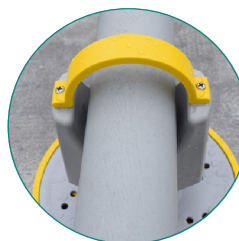


Durability

KnuckleHead installations have been performing in the field for more than 20 years with continual exposure to high temperatures, moisture, freeze-thaw cycles, UV exposure and stress, and they have shown no signs of deterioration.

Stability

Molded from tough weatherproof polymer and tinted safety yellow, KnuckleStraps attach to the KnuckleHead to hold pipes in place.



Adhesive/Sealant

Green Link Adhesive/Sealant is an environmentally safe, proprietary formulation

designed to adhere to the KnuckleHead base as well as to most roof membranes including PVC, EPDM, acrylic and primed TPO. The adhesive can be used to strengthen attached systems, or by itself without mechanical fasteners where penetrating the roof membrane is not desired. Green Link Adhesive/Sealant creates a strong bond delivering more than 275 psi shear strength.

Extensions

KnuckleHead Extensions increase elevations of pipes, struts, solar arrays or walkways. Kits include an 8-, 12-, or 18-inch extension cylinder that fits into the Universal Base, a threaded rod and coupling and Green Link Adhesive/Sealant.

Warranty

A 10-year warranty is available. Please contact Green Link for details.