



2020

GREENLINK Engineering KnuckleHead Support System Product Catalog

Made in the USA

5519 E Cork St.

Kalamazoo, MI 49048

CONTRACTOR HOTLINE: 888-672-9897 Local: 269-216-9229

sales@greenlinkengineering.com

greenlinkengineering.com

Contents

KNUCKLEHEAD TECHNOLOGY	3
LITE PIPE KNUCKLEHEAD	4
HEAVY PIPE KNUCKLEHEAD	5
STRUT KNUCKLEHEAD	6
STANCHION KNUCKLEHEAD	7
LOW PROFILE KNUCKLEHEAD SUPPORT KIT	8
ELEVATED KNUCKLEHEAD SUPPORT KIT	9
PEDESTAL KNUCKLEHEAD	10
PAVER KNUCKLEHEAD	11
SOLAR KNUCKLEHEAD	12
ACCESSORIES	13
GREEN LINK ADHESIVE/SEALANT	14

RESOURCES:

<https://greenlinkengineering.com/resources/>

Returned Goods Policy: All requests for returned goods must be received in writing within 30 days of delivery and must be authorized by GREEN LINK, Inc. Subject to inspection – a credit memo will be issued. There is a 25% restocking fee.

Terms: Shipping FOB Michigan, prepaid by credit card without approved credit application.

Introduction to the KnuckleHead Support System

Composition:

KnuckleHeads are an engineered product designed to perform at the highest level in the field. All KnuckleHeads are molded from glass-reinforced, military-grade nylon resin, which is tough, weatherproof, and impervious to freeze-thaw cycles. KnuckleHeads are designed with a range of adjustability up to 1" in height. (See product for overall height). Adjustment is made by simply rotating the KnuckleHead. Greater elevations can be achieved by using KnuckleHead extensions. Each KnuckleHead can support up to 600 pounds of weight.

Universal Base:

The Universal Base is 7 inches in diameter and provides 38.5 square inches of surface area. The center bolt is molded in place and is engineered to accept all KnuckleHead designs, which are attached by rotating. The Universal Base can be loose laid but features four holes in the center for mechanical attachment to the roof deck. Applying Green Link Adhesive/Sealant to the bottom of the base provides a seal that protects against leaks, but the adhesive can also be used to bond the base to a fully adhered roof membrane, reducing the need for mechanical fasteners. The outer holes in the base flange allow moisture-activated Green Link Adhesive/Sealant to cure. Safety yellow KnucklePads are compatible with all roofing membranes and can be added to reduce vibration and function as a slip sheet.

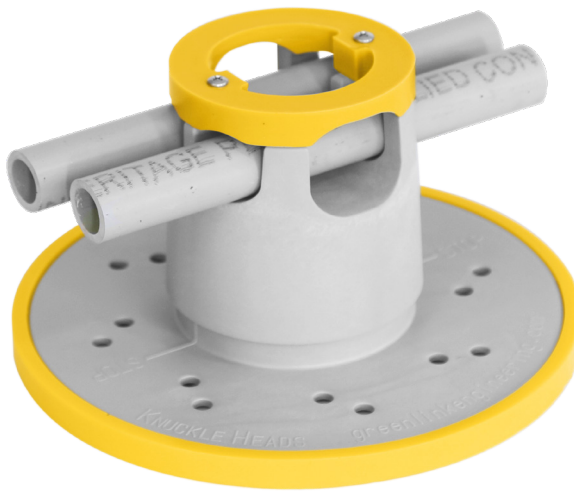
Big Base:

Green Link's 12-inch Big Base is engineered for situations where equipment and pipelines are to be installed at higher elevations requiring greater stability. The Big Base provides 113.1 square inches of surface area. Like the Universal Base, the Big Base may be bonded, mechanically attached or loose laid. The Big Base has an integrated safety yellow slip sheet.

Installation Note:

Consult a roofing contractor for attachment to the roof deck and manufacturer's penetration details on warranted roofs.





Lite Pipe KnuckleHead

The Lite Pipe KnuckleHead is designed to support a single 1.315" OD pipe or up to two .840" OD pipes. Lite Pipe KnuckleHeads are height adjustable from 2.25" to 3.25" and have a safety yellow cap for pipe containment. Lite Pipe KnuckleHeads are shipped on Universal Bases unless otherwise specified.

LITE PIPE KNUCKLEHEAD*

2006-12	12 LITE PIPE KNUCKLEHEADS WITH UNIVERSAL BASES
2006-KIT-12	12 LITE PIPE KNUCKLEHEADS WITH UNIVERSAL BASES AND 2 CTGS. GREEN LINK ADHESIVE SEALANT
2006-BULK-100	100 LITE PIPE KNUCKLEHEADS WITH UNIVERSAL BASES
*OTHER QUANTITIES AVAILABLE UPON REQUEST	

Lite Pipe KnuckleHead Extensions

KnuckleHead Extensions are available for applications exceeding base height. Stock extensions are available in three sizes with custom height available upon request. Extensions may be custom cut to meet alternative height requirements.



LITE PIPE KNUCKLEHEAD EXTENSIONS**

EXT-8-2006	1 LITE PIPE KNUCKLEHEAD ON 8" HEIGHT EXTENSION
EXT-12-2006	1 LITE PIPE KNUCKLEHEAD ON 12" HEIGHT EXTENSION
EXT-18-2006	1 LITE PIPE KNUCKLEHEAD ON 18" HEIGHT EXTENSION
**OTHER SIZES AVAILABLE UPON REQUEST	

Lite Pipe KnuckleHead Extensions with Big Base

Big Bases are recommended for free-standing applications over 12" in height.

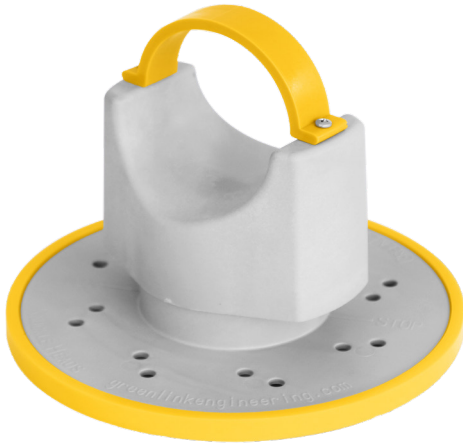
LITE PIPE KNUCKLEHEAD EXTENSIONS WITH BIG BASE***

EXT-8-2006-BB	1 LITE PIPE KNUCKLEHEAD ON 8" HEIGHT EXTENSION WITH BIG BASE
EXT-12-2006-BB	1 LITE PIPE KNUCKLEHEAD ON 12" HEIGHT EXTENSION WITH BIG BASE
EXT-18-2006-BB	1 LITE PIPE KNUCKLEHEAD ON 18" HEIGHT EXTENSION WITH BIG BASE
***OTHER SIZES AVAILABLE UPON REQUEST	



ACCESSORIES

A-2001-PAD	SAFETY YELLOW ANTI-VIBRATION SLIP SHEET
3004-GLGR-12PK	12 CTGS. OF GREEN LINK ADHESIVE /SEALANT
3004-GLGR-24PK	24 CTGS. OF GREEN LINK ADHESIVE /SEALANT



Heavy Pipe KnuckleHead

The Heavy Pipe KnuckleHead is designed to support pipes up to 3" OD. Heavy Pipe KnuckleHeads are height adjustable from 2" to 3" and have a safety yellow cap for containment. Heavy Pipe KnuckleHeads are shipped on Universal Bases unless otherwise specified.

HEAVY PIPE KNUCKLEHEAD*

2011-12	12 HEAVY PIPE KNUCKLEHEADS WITH UNIVERSAL BASES
2011-KIT-12	12 HEAVY PIPE KNUCKLEHEADS WITH UNIVERSAL BASES AND 2 CTGS. GREEN LINK ADHESIVE SEALANT
2011-BULK-100	100 HEAVY PIPE KNUCKLEHEADS WITH UNIVERSAL BASES
*OTHER QUANTITIES AVAILABLE UPON REQUEST	

Strut KnuckleHead Extensions

KnuckleHead Extensions are available for applications exceeding base height. Stock extensions are available in three sizes with custom height available upon request. Extensions may be custom cut to meet alternative height requirements.

HEAVY PIPE KNUCKLEHEAD EXTENSIONS**

EXT-8-2011	1 HEAVY PIPE KNUCKLEHEAD ON 8" HEIGHT EXTENSION
EXT-12-2011	1 HEAVY PIPE KNUCKLEHEAD ON 12" HEIGHT EXTENSION
EXT-18-2011	1 HEAVY PIPE KNUCKLEHEAD ON 18" HEIGHT EXTENSION
**OTHER SIZES AVAILABLE UPON REQUEST	

Heavy Pipe KnuckleHead Extensions with Big Base

Big Bases are recommended for free-standing applications over 12" in height.

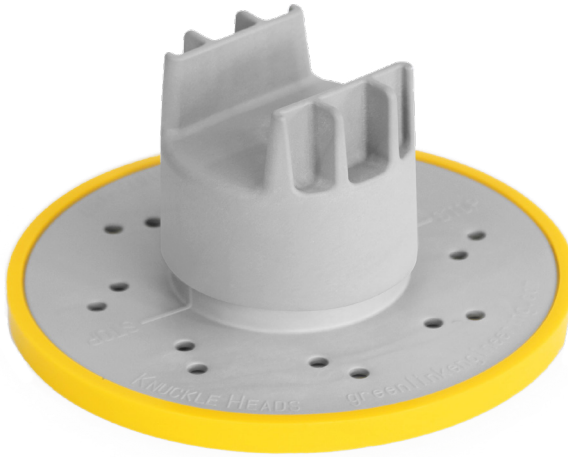
HEAVY PIPE KNUCKLEHEAD EXTENSIONS WITH BIG BASE***

EXT-8-2011-BB	1 HEAVY PIPE KNUCKLEHEAD ON 8" HEIGHT EXTENSION WITH BIG BASE
EXT-12-2011-BB	1 HEAVY PIPE KNUCKLEHEAD ON 12" HEIGHT EXTENSION WITH BIG BASE
EXT-18-2011-BB	1 HEAVY PIPE KNUCKLEHEAD ON 18" HEIGHT EXTENSION WITH BIG BASE
***OTHER SIZES AVAILABLE UPON REQUEST	

ACCESSORIES

A-2001-PAD	SAFETY YELLOW ANTI-VIBRATION SLIP SHEET
3004-GLGR-12PK	12 CTGS. OF GREEN LINK ADHESIVE /SEALANT
3004-GLGR-24PK	24 CTGS. OF GREEN LINK ADHESIVE /SEALANT





Strut KnuckleHead

The Strut KnuckleHead is designed to support metal strut for installation of HVAC equipment, pipes, ductwork and solar arrays. Strut KnuckleHeads are height adjustable from 3.2" to 5". Strut KnuckleHeads are shipped on Universal Bases unless otherwise specified.

STRUT KNUCKLEHEAD*

2007-12	12 STRUT KNUCKLEHEADS WITH UNIVERSAL BASES
2007-KIT-12	12 STRUT KNUCKLEHEADS WITH UNIVERSAL BASES AND 2 CTGS. GREEN LINK ADHESIVE SEALANT
2007-BULK-100	100 STRUT KNUCKLEHEADS WITH UNIVERSAL BASES
*OTHER QUANTITIES AVAILABLE UPON REQUEST	

Strut KnuckleHead Extensions

KnuckleHead Extensions are available for applications exceeding base height. Stock extensions are available in three sizes with custom height available upon request. Extensions may be custom cut to meet alternative height requirements.

STRUT KNUCKLEHEAD EXTENSIONS**

EXT-8-2007	1 STRUT KNUCKLEHEAD ON 8" HEIGHT EXTENSION
EXT-12-2007	1 STRUT KNUCKLEHEAD ON 12" HEIGHT EXTENSION
EXT-18-2007	1 STRUT KNUCKLEHEAD ON 18" HEIGHT EXTENSION
**OTHER SIZES AVAILABLE UPON REQUEST	

Strut KnuckleHead Extensions with Big Base

Big Bases are recommended for free-standing applications over 12" in height.

STRUT KNUCKLEHEAD EXTENSIONS WITH BIG BASE***

EXT-8-2007-BB	1 STRUT KNUCKLEHEAD ON 8" HEIGHT EXTENSION WITH BIG BASE
EXT-12-2007-BB	1 STRUT KNUCKLEHEAD ON 12" HEIGHT EXTENSION WITH BIG BASE
EXT-18-2007-BB	1 STRUT KNUCKLEHEAD ON 18" HEIGHT EXTENSION WITH BIG BASE
***OTHER SIZES AVAILABLE UPON REQUEST	

ACCESSORIES

A-2001-PAD	SAFETY YELLOW ANTI-VIBRATION SLIP SHEET
3004-GLGR-12PK	12 CTGS. OF GREEN LINK ADHESIVE /SEALANT
3004-GLGR-24PK	24 CTGS. OF GREEN LINK ADHESIVE /SEALANT



Stanchion KnuckleHead

The Stanchion KnuckleHead features a 24" length of strut molded into the head, allowing for a great deal of adjustability when building with strut. The Stanchion KnuckleHead has an integrated gasket to create a weather-proof seal. This KnuckleHead is designed to support HVAC equipment, large pipes and duct work. Stanchion KnuckleHeads are height adjustable from 5" to 24" dependent on height requirements. Additional hardware for mounting is available upon request.



STANCHION KNUCKLEHEADS

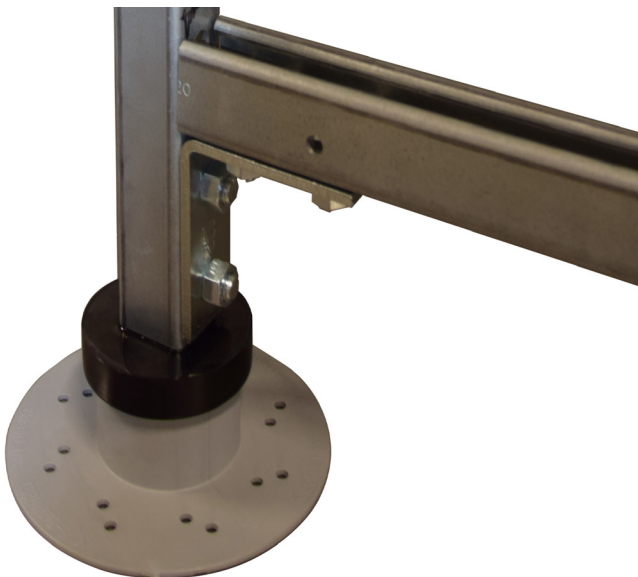
R2001-UB	1 STANCHION KNUCKLEHEAD ON UNIVERSAL BASE
R2001-UB-4	4 STANCHION KNUCKLEHEADS ON UNIVERSAL BASES

STANCHION KNUCKLEHEADS ON BIG BASE

R2001-BB	STANCHION KNUCKLEHEAD ON BIG BASE
R2001-BB-4	4 STANCHION KNUCKLEHEADS ON BIG BASES

ACCESSORIES

A-2001-PAD	SAFETY YELLOW ANTI-VIBRATION SLIP SHEET
3004-GLGR-12PK	12 CTGS. OF GREEN LINK ADHESIVE /SEALANT
3004-GLGR-24PK	24 CTGS. OF GREEN LINK ADHESIVE /SEALANT
R2001-HW-1	1 90° BRACKET WITH 4 1/2-13 BOLTS, WASHERS AND NUTS
R2001-HW-4	4 90° BRACKETS WITH 16 1/2-13 BOLTS, WASHERS AND NUTS





Low Profile KnuckleHead Support Kit

The Low Profile KnuckleHead Support Kit is designed to support HVAC units requiring elevation of 6-7". The unit features height adjustability of 1 inch by rotating Strut KnuckleHeads and width adjustable by moving equipment support rails. Additional height adjustment can be achieved by using low profile or double strut. This kit comes with all hardware and pieces required to support HVAC equipment. Standard sizes are listed below, but additional sizes are available upon request for multi-unit banks.

LOW PROFILE KNUCKLEHEAD SUPPORT KIT*

6102-3X4-GLAS	3'X4' MECHANICAL SUPPORT KIT WITH GREEN LINK ADHESIVE/SEALANT
6103-4X4-GLAS	4'X4' MECHANICAL SUPPORT KIT WITH GREEN LINK ADHESIVE/SEALANT
6104-4X5-GLAS	4'X5' MECHANICAL SUPPORT KIT WITH GREEN LINK ADHESIVE/SEALANT
6105-4X6-GLAS	4'X6' MECHANICAL SUPPORT KIT WITH GREEN LINK ADHESIVE/SEALANT
*OTHER SIZES AVAILABLE UPON REQUEST	





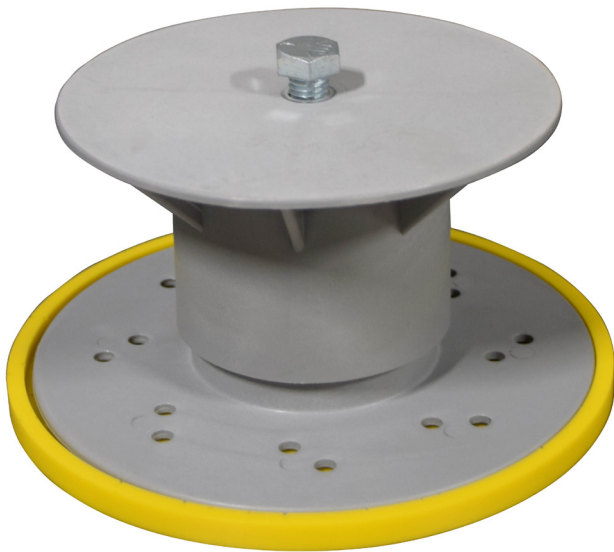
Elevated KnuckleHead Support Kit

The Elevated KnuckleHead Support Kit is a single source solution for supporting HVAC equipment. The single unit support kit includes 4 Stanchion KnuckleHeads, which allow unit height to be adjusted from 7” to 24” depending upon height requirements, and all strut and hardware required for mounting units. This standard kit is available in the sizes below but can be custom made to meet specific needs or create banks of units. This kit is available with the Universal or Big Base. The Big Base is recommended is for units free-standing at heights over 12”.

ELEVATED KNUCKLEHEAD SUPPORT KIT*

6200-UB-3X4	3'X4' HEIGHT ADJUSTABLE UNIT WITH UNIVERSAL BASE
6201-BB-3X4	3X4 HEIGHT ADJUSTABLE UNIT WITH BIG BASE
6203-UB-4X4	4X4 HEIGHT ADJUSTABLE UNIT WITH UNIVERSAL BASE
6203-BB-4x4	4X4 HEIGHT ADJUSTABLE UNIT WITH BIG BASE
6205-UB-4X5	4X5 HEIGHT ADJUSTABLE UNIT WITH UNIVERSAL BASE
6204-BB-4X5	4X5 HEIGHT ADJUSTABLE UNIT WITH BIG BASE
*OTHER SIZES AVAILABLE UPON REQUEST	





Pedestal KnuckleHead

The Pedestal KnuckleHead is designed to support mechanical equipment. A tapped center hole allows for easy attachment of the HVAC unit. The Pedestal Support is height adjustable from 3.75" to 4.85"

Available in 1/2" or 3/8" thread sizes.

PEDESTAL KNUCKLEHEAD*

6000	4 PEDESTAL SUPPORT KNUCKLEHEADS WITH HARDWARE, ANTI-VIBRATION PADS AND KNUCKLEPADS
6001	4 PEDESTAL SUPPORT KNUCKLEHEADS WITH HARDWARE, ANTI-VIBRATION PADS AND GREEN LINK ADHESIVE/SEALANT
6002	4 PEDESTAL SUPPORT KNUCKLEHEADS WITH HARDWARE AND KNUCKLEPADS
6003	4 PEDESTAL SUPPORT KNUCKLEHEADS WITH HARDWARE AND GREEN LINK ADHESIVE/SEALANT



Paver KnuckleHead

The Paver KnuckleHead is designed to support pavers and walkways. Each Paver KnuckleHead is able to support up to 600 pounds of weight. Paver KnuckleHeads are height adjustable from 3.75" to 4.85" from base to support point.



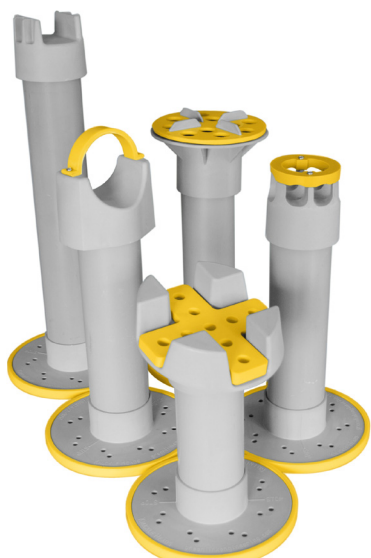
PAVER KNUCKLEHEAD*

2005-KIT-6	6 PAVER KNUCKLEHEADS WITH UNIVERSAL BASE AND 2 CTGS. GREEN LINK ADHESIVE/SEALANT
2005-BULK-50	50 PAVER KNUCKLEHEADS WITH UNIVERSAL BASE

*OTHER QUANTITIES AVAILABLE UPON REQUEST

Paver KnuckleHead Extensions

KnuckleHead Extensions are available for applications exceeding standard height. Stock extensions are available in three sizes with custom height available upon request. Extensions may be custom cut to meet alternative height requirements.



PAVER KNUCKLEHEAD EXTENSIONS**

EXT-8-2005-KIT	4 PAVER KNUCKLEHEADS ON 8" HEIGHT EXTENSIONS WITH 1 CTG GLA/S
EXT-12-2005-KIT	4 PAVER KNUCKLEHEADS ON 12" HEIGHT EXTENSIONS WITH 1 CTG GLA/S
EXT-18-2005-KIT	4 PAVER KNUCKLEHEAD ON 18" HEIGHT EXTENSIONS WITH 1 CTG GLA/S

**OTHER SIZES AVAILABLE UPON REQUEST

Paver KnuckleHead Extensions with Big Base

Big Bases are recommended for free-standing applications over 12" in height.

PAVER KNUCKLEHEAD EXTENSIONS WITH BIG BASE***

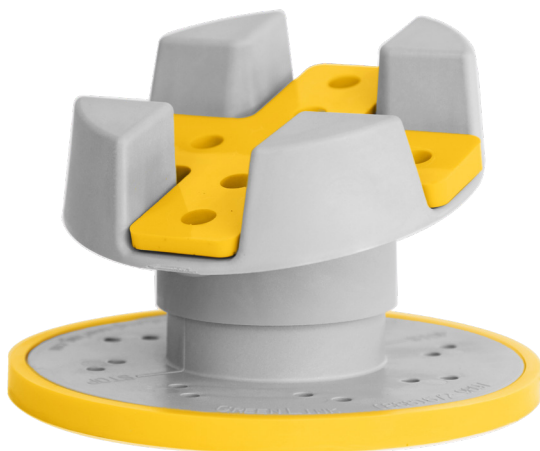
EXT-8-2005-BB	4 PAVER KNUCKLEHEADS ON 8" HEIGHT EXTENSIONS WITH BIG BASE
EXT-12-2005-BB	4 PAVER KNUCKLEHEADS ON 12" HEIGHT EXTENSIONS WITH BIG BASE
EXT-18-2005-BB	4 PAVER KNUCKLEHEADS ON 18" HEIGHT EXTENSIONS WITH BIG BASE

***OTHER SIZES AVAILABLE UPON REQUEST

ACCESSORIES

A-2001-PAD	SAFETY YELLOW ANTI-VIBRATION SLIP SHEET
A-2005-PAD	SAFETY YELLOW PAVER TOP PAD
3004-GLGR-12PK	12 CTGS. OF GREEN LINK ADHESIVE /SEALANT
3004-GLGR-24PK	24 CTGS. OF GREEN LINK ADHESIVE /SEALANT





Solar KnuckleHead

This KnuckleHead is designed to support solar arrays at a 15-degree angle. Each Solar KnuckleHead can support 600 lbs. of weight. Solar KnuckleHeads are height adjustable from 2" to 3" from base to support point.

SOLAR KNUCKLEHEAD*

2020-KIT-6	6 SOLAR KNUCKLEHEADS WITH UNIVERSAL BASES AND 2 CTGS. GREEN LINK ADHESIVE SEALANT
2020-BULK-60	60 SOLAR KNUCKLEHEADS WITH UNIVERSAL BASES

*OTHER QUANTITIES AVAILABLE UPON REQUEST

Solar KnuckleHead Extensions

KnuckleHead Extensions are available for applications exceeding base height. Stock extensions are available in three sizes with custom height available upon request. Extensions may be custom cut to meet alternative height requirements.



SOLAR KNUCKLEHEAD EXTENSIONS**

EXT-8-2020-KIT	4 SOLAR KNUCKLEHEADS ON 8" HEIGHT EXTENSIONS WITH 1 CTG GLA/S
EXT-12-2020-KIT	4 SOLAR KNUCKLEHEADS ON 12" HEIGHT EXTENSIONS WITH 1 CTG GLA/S
EXT-18-2020-KIT	4 SOLAR KNUCKLEHEADS ON 18" HEIGHT EXTENSIONS WITH 1 CTG GLA/S

**OTHER SIZES AVAILABLE UPON REQUEST

Strut KnuckleHead Extensions with Big Base

Big Bases are recommended for free-standing applications over 12" in height.

SOLAR KNUCKLEHEAD EXTENSIONS WITH BIG BASE***

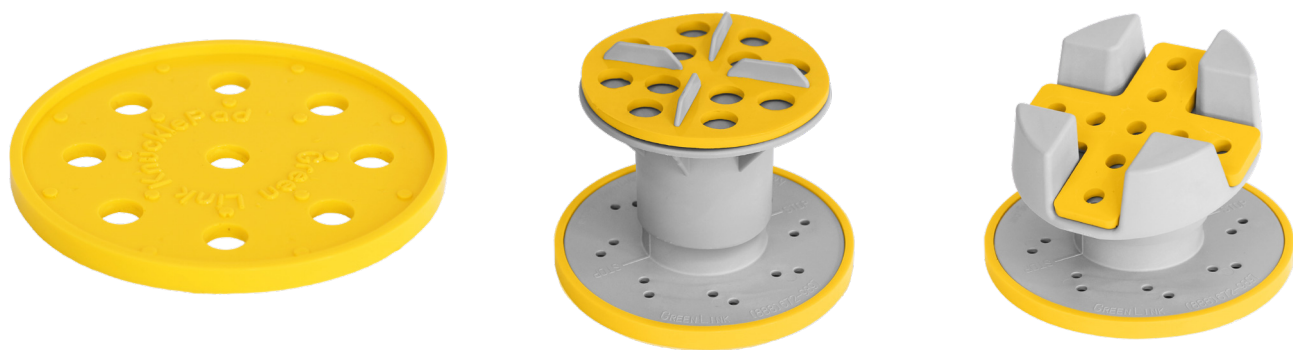
EXT-8-2020-BB	4 SOLAR KNUCKLEHEAD ON 8" HEIGHT EXTENSION WITH BIG BASE
EXT-12-2020-BB	4 SOLAR KNUCKLEHEADS ON 12" HEIGHT EXTENSIONS WITH BIG BASE
EXT-18-2020-BB	4 SOLAR KNUCKLEHEADS ON 18" HEIGHT EXTENSIONS WITH BIG BASE

***OTHER SIZES AVAILABLE UPON REQUEST



ACCESSORIES

A-2001-PAD	SAFETY YELLOW ANTI-VIBRATION SLIP SHEET
A-2020-WEDGE	SAFETY YELLOW 5-DEGREE ANGLE PAD
3004-GLGR-12PK	12 CTGS. OF GREEN LINK ADHESIVE /SEALANT
3004-GLGR-24PK	24 CTGS. OF GREEN LINK ADHESIVE /SEALANT



KnucklePads

KnucklePads are safety yellow urethane slip sheet/anti-vibration pads which are excellent in loose-laid applications. KnucklePads are optional but offer a professional look with the benefits of being both a required slip sheet and a vibration dampener.

Paver Pad

The Paver Pad is an anti-vibration pad that is designed to be used with the Paver KnuckleHead.

Solar Wedge

The Solar Wedge allows for a 5-degree adjustment in either direction when used in conjunction with the Solar KnuckleHead. The Solar Wedge consists of safety yellow urethane.

ACCESSORIES

A-2001-PAD	SAFETY YELLOW ANTI-VIBRATION SLIP SHEET
A-2005-PAD	SAFETY YELLOW ANTI-VIBRATION PAVER PAD
A-2020-WEDGE	± 5 DEGREE ANGLE CHANGER FOR SOLAR KNUCKLEHEAD



Green Link Adhesive/Sealant

Green Link Adhesive/Sealant is a polyether-based, moisture-cure formula that has been proven in the construction industry over many years. The adhesive is high performing and bonds to a wide range of roofing membranes including PVC, EPDM, Mod Bit and TPO*. It provides up to 275 psi bond strength between the Universal Base and single-ply or built up membranes.

Green Link Adhesive/Sealant is 100% solids and it cures by contact with moisture, so there is no shrinkage and it can be applied directly in ponding water.

The sealant is entirely safe with no risk of fire, explosion, or toxic exposure to workers or building inhabitants. It meets the requirements of California Regs: CARB, BAAQMD and SCAQMD. It does not contain cancer-causing chemicals listed in California Proposition 65 and the VOC content is less than 15 per grams per liter.

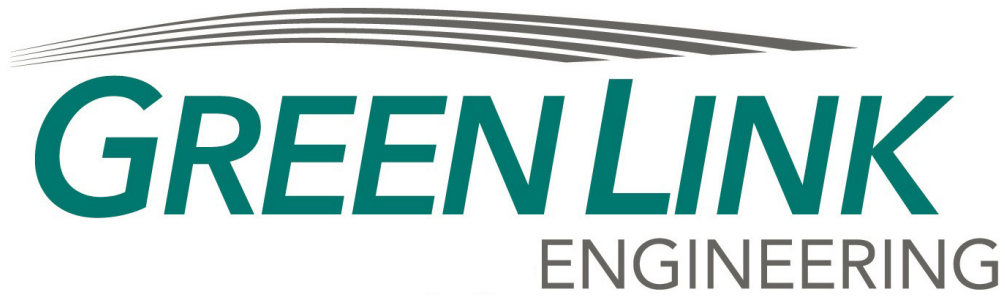
*Primer must be used when bonding to TPO membranes

Quantity Guide

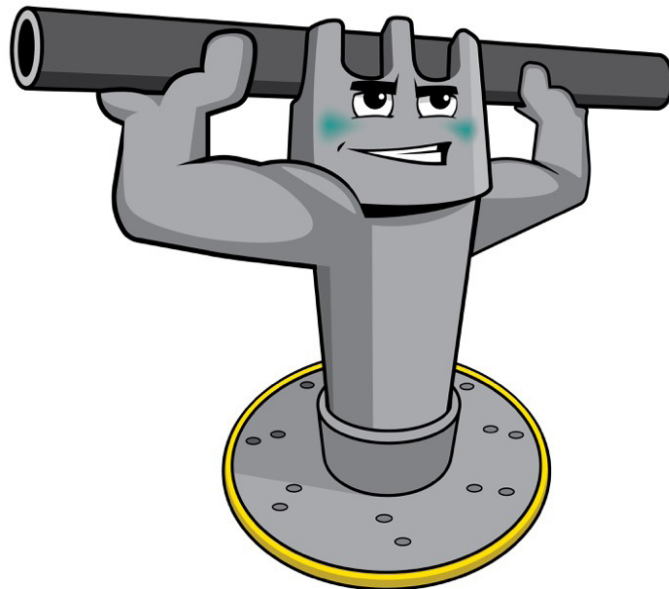
- 1 cartridge of Green Link Adhesive/Sealant is recommended for each 6 KnuckleHeads on Universal Bases.
- 1 cartridge of Green Link Adhesive/Sealant is recommended for each 4 KnuckleHeads on Big Bases.

ADHESIVE/SEALANT

3004-GLGR-EA	1 CTG. GREEN LINK ADHESIVE SEALANT
3004-GLGR-12PK	12 CTGS. GREEN LINK ADHESIVE/SEALANT
3004-GLGR-24PK	24 CTGS. GREEN LINK ADHESIVE/SEALANT



KNUCKLE UP!



[https://greenlinkengineering.](https://greenlinkengineering.com)

CONTRACTOR HOTLINE: 1-888-672-9897