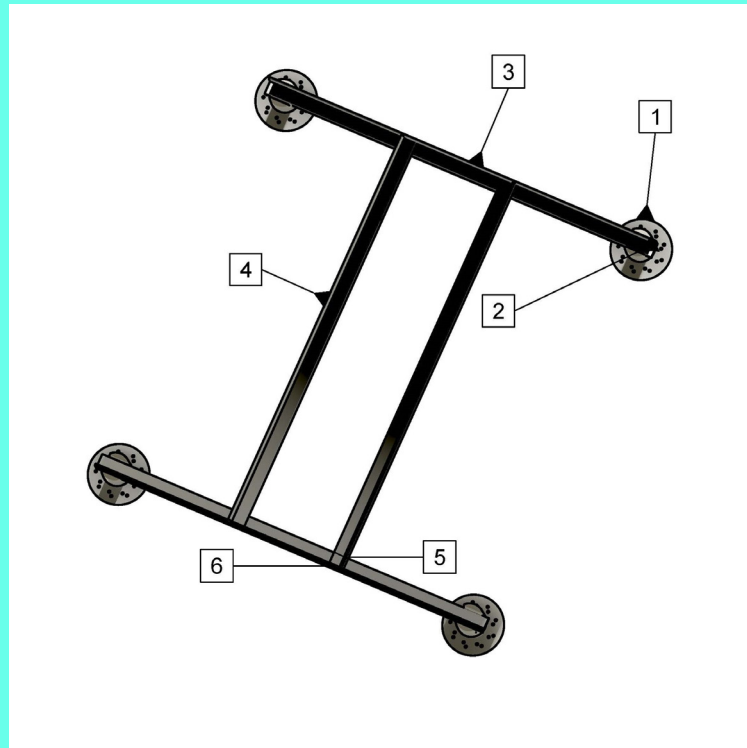


# KnuckleHead

## Low Profile Mechanical Support Assembly



ID	QTY.	DESCRIPTION
1	4	STRUT KNUCKLEHEAD
2	4	1/4-20 BOLT AND NUT
3	2	SUPPORT RAIL
4	2	EQUIPMENT SUPPORT RAIL
5	4	3 HOLE CONNECTOR BRACKET
6	12	1/2-13 BOLT, WASHER AND STRUT NUT
	8	VINYL END CAP

**MADE IN THE U.S.A.**

GREENLINKENGINEERING.COM  
 CONTRACTOR HOT LINE: 888.672.9897  
 5519 E CORK ST. KALAMAZOO, MI 49048



4 STRUT KNUCKLEHEAD SUPPORTS  
 DRILLED TO ACCOMMODATE 4 X 1/4-20  
 BOLTS AND NUTS

2 SUPPORT RAILS (ATTACHED TO  
 STRUT KNUCKLEHEADS)

2 EQUIPMENT SUPPORT RAILS

8 VINYL STRUT CAPS

BAG CONTAINING 4 X 3 HOLE  
 CONNECTOR BRACKETS AND 12 X  
 1/2-13 BOLTS, WASHERS AND STRUT  
 NUTS FOR CONNECTING EQUIPMENT  
 SUPPORT RAIL TO SUPPORT RAIL

OPTIONAL ACCESSORIES:

4 KNUCKLEPADS

1 TUBE GREEN LINK  
 ADHESIVE/SEALANT

EQUIPMENT MOUNTING HARDWARE &  
 ANTI-VIBRATION PADS

**TOOLS REQUIRED:**  
 3/4" SOCKET  
 MEASURING TAPE & MARKER

**WHAT'S IN THE BOX?**

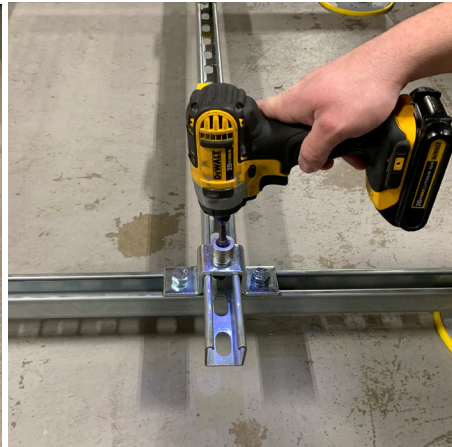


# Now We Build

**STEP 1** PLACE SUPPORT RAILS & EQUIPMENT  
SUPPORT RAILS BASED ON DEPTH OF UNIT



**STEP 2** REMOVE HARDWARE AND PLACE ON  
EQUIPMENT SUPPORT RAIL, SECURE WITH  
SOCKET



**STEP 3** TURN BASE OF STRUT KNUCKLEHEAD UP TO  
1" FOR ANY REQUIRED LEVELING. PLACE  
KNUCKLEPADS UNDER BASE IF INCLUDED  
INSTALL VINYL END CAPS



**STEP 4** PLACE UNIT USING INCLUDED HARDWARE  
AND ANTI-VIBRATION PADS IF REQUESTED,  
OR HARDWARE OF YOUR CHOOSING.  
ADJUST HEIGHT AND WIDTH AS NECESSARY

