

KnuckleHead

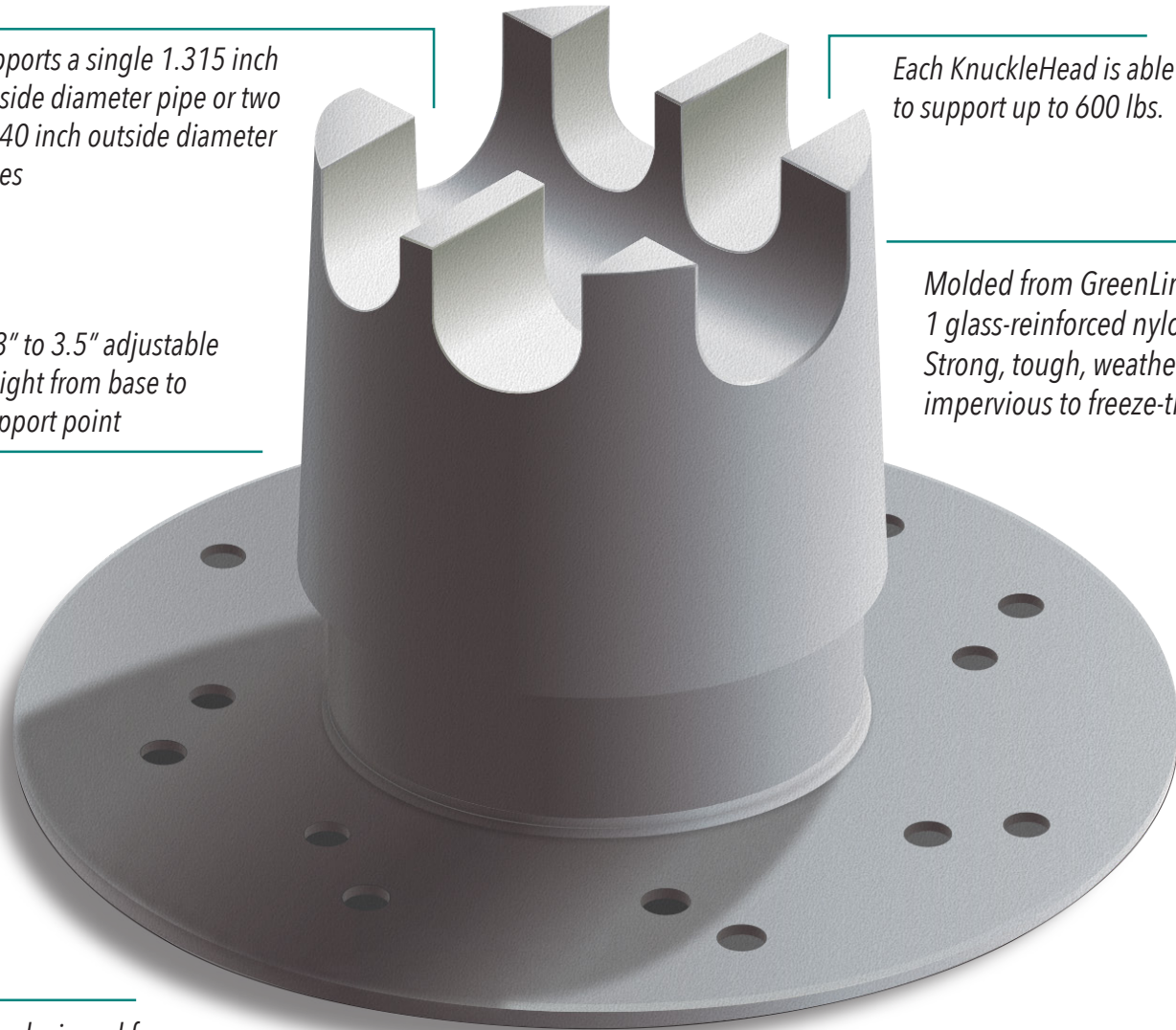
Lite Pipe Support System

Supports a single 1.315 inch outside diameter pipe or two 0.840 inch outside diameter pipes

Each KnuckleHead is able to support up to 600 lbs.

2.3" to 3.5" adjustable height from base to support point

Molded from GreenLink Type 1 glass-reinforced nylon resin. Strong, tough, weatherproof, impervious to freeze-thaw cycles



Base designed for adhesive attachment or mechanical fastening for seismic/wind uplift specification

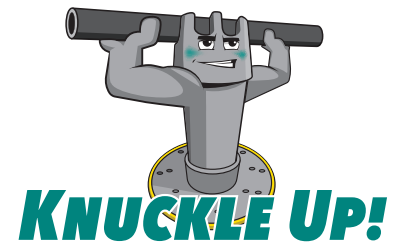
Matte-finish nylon allows bonding with adhesive

GREEN LINK
ECO-ENGINEERING



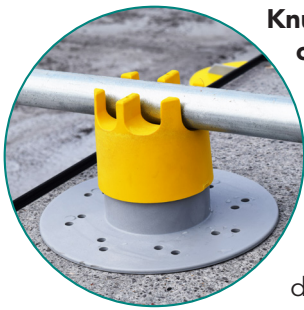
KnuckleHead

Lite Pipe Support System



KnuckleHead Lite Pipe Supports are designed for a wide variety of roof support applications including PVC, condensation pipes, electrical conduit and other types of pipes up to 1" nominal pipe size. The KnuckleHead Lite Pipe Support System is designed to accommodate a single 1" nominal pipe or two ½" nominal pipes. Each KnuckleHead can support up to 600 lbs. Units can be spaced to evenly distribute the load of the heaviest equipment. Lite Pipe supports are lightweight, so they add little to total roof load, preventing low points and depressions that invite ponding water and ice build-up.

Important points about The KnuckleHead Support System



KnuckleHeads will prevent damage caused by ponding water, wind, ice, flying debris or seismic events and protect the integrity of the roofing system including roof-mounted structures and equipment.

They are engineered with a Universal Base. A range of head designs are available depending on the particular support application needed.

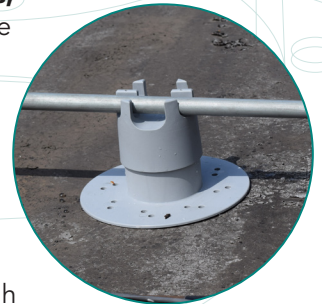
KnuckleHeads can be attached directly to the roof substrate either mechanically combined with *GREEN LINK Adhesive/Sealant*, or with *GREEN LINK Adhesive/Sealant* alone.

Where the protocols of the original single-ply membrane manufacturer and/or warranty provider must be met, a Halo Target Flashing can be applied. MB, EPDM, PVC, and TPO Halo Target Flashings are available from *GREEN LINK*. Flashings are heat welded and/or adhered to the KnuckleHead base and to the roofing membrane.

In some applications, *GREEN LINK Adhesive/Sealant* by itself is sufficient to create a strong bond with more than 250 psi shear strength to ensure KnuckleHead integrity under high wind conditions or seismic events. Pipe straps are available to provide additional security.

When mechanical fasteners are used, *GREEN LINK Adhesive/Sealant* should be applied around the perimeter of the base and on each screw head to prevent roof leaks caused by penetration.

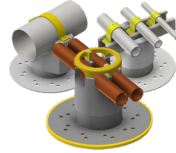
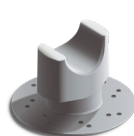
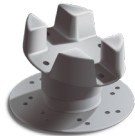
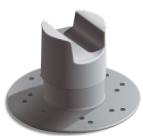
The base features 12 holes, allowing adhesive to squeeze out as the base is pressed onto the roof surface. This creates "adhesive rivets" which strengthen the bond.



KnuckleHead installations have been performing in the field for more than 10 years, with constant exposure to high temperatures, freeze-thaw cycles, UV exposure and stress, and they have shown no signs of deterioration.

***GREEN LINK Adhesive/Sealant* is environmentally safe and presents no toxic risk to contractors or building occupants.** It is solvent-free, isocyanate-free, non-flammable and odorless.

A 10-year warranty is available. Please contact *GREEN LINK* for details.



GREEN LINK
ECO-ENGINEERING

269.216.9229 | 888.672.9897 | www.greenlinkengineering.com
5519 East Cork Street, Kalamazoo, MI 49048 USA