



GREEN LINK

ENGINEERING SUSTAINABILITY

Rooftop Support Systems

2023 Product Catalog

Made in the USA
5519 E Cork St.
Kalamazoo, MI 49048
CONTRACTOR HOTLINE: 888-672-9897 LOCAL: 269-216-9229
sales@greenlinkengineering.com
greenlinkengineering.com



Made in the U.S.A.

TABLE OF CONTENTS

KNUCKLEHEAD TECHNOLOGY	3
LITE PIPE KNUCKLEHEAD	4
HEAVY PIPE KNUCKLEHEAD	5
STRUT KNUCKLEHEAD	6
KNUCKLEHEAD EXTENSION	7-8
STANCHION KNUCKLEHEAD	8-9
SOLAR KNUCKLEHEAD	10
PAVER KNUCKLEHEAD	11
PEDESTAL KNUCKLEHEAD	12
GREEN LINK ADHESIVE/SEALANT	13
METALHEAD	14
PIPE GUIDE & SNAP-N-STRUT	15
GREEN LINK STRUT FRAMES	
LOW PROFILE KNUCKLEHEAD MECHANICAL SUPPORT KIT	16-17
HIGH PROFILE KNUCKLEHEAD MECHANICAL SUPPORT KIT	18-19
PIPE & DUCT STRUT FRAMES	19-20
ACCESSORIES	21

RESOURCES: <https://greenlinkengineering.com/resources>

Payment and Credit Terms: All payment is due at time of shipping unless credit terms have been established. Standard credit terms are NET 30 days. An additional 1.5% per month fee will be charged on overdue accounts.

Quotes and Estimates: Estimates are valid for 5 business days from issue date

Freight Terms: Shipping FOB Kalamazoo Michigan - Prepaid and Add.

Returned Goods Policy: All requests for returned goods must be received in writing within 30 days of delivery and must be authorized by GREEN LINK Inc. Subject to inspection, a credit memo will be issued. There is a 25% restocking fee.

Introduction to the KnuckleHead Support System

Composition

KnuckleHeads, an engineered product, are designed to perform at the highest level under field conditions. Able to support up to 600 pounds, KnuckleHeads are molded from glass-reinforced, military-grade nylon resin, which is tough, weatherproof, UV stable, and impervious to freeze-thaw cycles. KnuckleHeads are designed with a range of adjustability up to 1 inch (see product for overall dimensions), by simply rotating the KnuckleHead. If necessary, the height can be adjusted further using KnuckleHead extensions.



Universal Base

The Universal Base is 7 inches in diameter and provides 38.5 square inches of surface area. The center bolt is molded in place and is compatible with all KnuckleHead designs, which are attached by simply screwing them onto the base. The Universal Base can be loose laid but features four holes in the center for mechanical attachment to the roof deck. Green Link Adhesive/Sealant, when applied to the bottom of the base, does create a seal that protects against leaks caused by mechanical attachments. However, it can also be used to bond the base to a fully adhered roof membrane, reducing the need for fasteners under suitable conditions. Green Link's Adhesive/Sealant is moisture-activated and the outer holes on the base flange allow it to cure quickly and thoroughly. Alternatively, safety yellow KnucklePads are compatible with all roofing membranes and function as a slip sheet.

Big Base

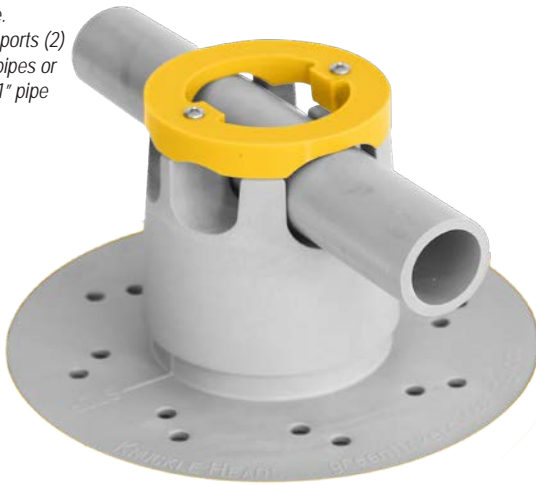
Green Link's 12 inch Big Base is engineered for situations where equipment and pipelines need to be installed at higher elevations and require greater stability; this base provides 113.1 square inches of surface area. Like the Universal Base, the Big Base may be bonded, mechanically attached, or loose laid. The Big Base has an integrated safety yellow slip sheet.

Installation Note

Consult a roofing contractor for attachment to the roof deck and manufacturer's penetration details on warrantied roofs.

Lite Pipe KnuckleHead

Shown with (1) 1" O.D.

pipe.
Supports (2)
.5" pipes or
(1) 1" pipe**Lite Pipe KnuckleHead**

The Lite Pipe KnuckleHead is designed to support a single pipe up to 1.315" O.D. pipe or two pipes up to .840" O.D. Lite Pipe KnuckleHeads are height adjustable from 2.25" to 3.25" and have a safety yellow cap for pipe containment. Lite Pipe KnuckleHeads are shipped on Universal Bases unless otherwise specified.

LITE PIPE KNUCKLEHEAD***PKG.WEIGHT/DIM**

2006-12	12 LITE PIPE KNUCKLEHEADS WITH UNIVERSAL BASES	10 LBS 16"x16"x10"
2006-KIT-12	12 LITE PIPE KNUCKLEHEADS WITH UNIVERSAL BASES AND 2 CTGS. GREEN LINK ADHESIVE/SEALANT	12 LBS 16"x16"x10"
2006-BULK-120	120 LITE PIPE KNUCKLEHEADS WITH UNIVERSAL BASES	88 LBS 31"x21"x22"

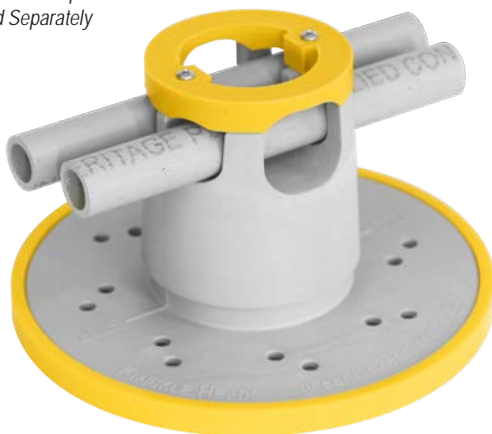
*OTHER QUANTITIES AVAILABLE UPON REQUEST



Lite Pipe KnuckleHeads support sloping lines on a commercial warehouse with a PVC roof. Loose laid standard KnuckleHeads and KnuckleHead Extensions are used to accomodate slope of pipe on this re-roofing project.

Lite Pipe KnuckleHeadShown with (2) .5" O.D. Pipes and safety yellow
KnucklePad slip sheet**

**Sold Separately

**ACCESSORIES****PKG. WEIGHT/DIM**

A-2001-PAD	SAFETY YELLOW SLIP SHEET	12 PK. (4 LBS. 13"x10"x10") 100 PK. (30 LBS. 15"x15"x15")
3004-GL-GR-12PK	12 CTGS. OF GREEN LINK ADHESIVE/SEALANT	13 LBS 13"x7"x8"
3004-GL-GR-24PK	24 CTGS. OF GREEN LINK ADHESIVE/SEALANT	26 LBS 13"x13"x9"

QUANTITY GUIDE: USE 1 CARTRIDGE SEALANT FOR EVERY (6) UNIVERSAL BASES. **SEE INSTALLATION INSTRUCTIONS [HERE](#) AND CONSULT ROOFING MANUFACTURER PRIOR TO PENETRATING ROOF.**

Heavy Pipe KnuckleHead

Supports Pipes up to
3" O.D.

**Heavy Pipe KnuckleHead**

The Heavy Pipe KnuckleHead is designed to support pipes **UP TO 3" O.D.** and are height adjustable from 2" to 3" with a safety yellow cap for containment. Heavy Pipe KnuckleHeads are shipped on Universal Bases unless otherwise specified.

HEAVY PIPE KNUCKLEHEAD***PKG.WEIGHT/DIM**

2011-12	12 HEAVY PIPE KNUCKLEHEADS WITH UNIVERSAL BASES	11 LBS 16"x16"x10"
2011-KIT-12	12 HEAVY PIPE KNUCKLEHEADS WITH UNIVERSAL BASES AND 2 CTGS. GREEN LINK ADHESIVE SEALANT	13 LBS 16"x16"x10"
2011-BULK-90	90 HEAVY PIPE KNUCKLEHEADS WITH UNIVERSAL BASES	83 LBS 31"x21"x22"

*OTHER QUANTITIES AVAILABLE UPON REQUEST



Free standing Heavy Pipe KnuckleHeads support single lines on the roof of a public school building. A variety of line sizes are present on the roof. In this instance the Heavy Pipe KnuckleHead accommodated all sizes, and the safety yellow strap contained lines.



8" Heavy Pipe KnuckleHead Extensions support a line on a PVC roof. The Heavy Pipe KnuckleHeads are mechanically attached and booted using the roofing manufacturer's recommendations.

Heavy Pipe KnuckleHead

Shown with safety yellow
KnucklePad slip sheet**

**Sold Separately

**ACCESSORIES****PKG. WEIGHT/DIM**

A-2001-PAD	SAFETY YELLOW SLIP SHEET	12 PK. (4 LBS. 13"x10"x10") 100 PK. (30 LBS. 15"x15"x15")
3004-GL-GR-12PK	12 CTGS. OF GREEN LINK ADHESIVE/SEALANT	13 LBS 13"x7"x8"
3004-GL-GR-24PK	24 CTGS. OF GREEN LINK ADHESIVE/SEALANT	26 LBS 13"x13"x9"

QUANTITY GUIDE: USE 1 CARTRIDGE SEALANT FOR EVERY (6) UNIVERSAL BASES. **SEE INSTALLATION INSTRUCTIONS [HERE](#) AND CONSULT ROOFING MANUFACTURER PRIOR TO PENETRATING ROOF.**

Strut KnuckleHead

Shown from above, with 1-5/8" slotted strut, adhered and bolted** to Strut KnuckleHead. Strut KnuckleHead is designed to accommodate all standard strut sizes. **Bolts and adhesive Sold Separately

**Strut KnuckleHead**

The Strut KnuckleHead is designed to support metal strut channel for installation of HVAC equipment, pipes, ductwork, and solar arrays. Strut KnuckleHeads are height adjustable from 3.2" to 5". They are shipped on Universal Bases unless otherwise specified.

STRUT KNUCKLEHEAD***PKG.WEIGHT/DIM**

2007-12	12 STRUT KNUCKLEHEADS WITH UNIVERSAL BASES	10 LBS 16"x16"x10"
2007-KIT-12	12 STRUT KNUCKLEHEADS WITH UNIVERSAL BASES AND 2 CTGS. GREEN LINK ADHESIVE SEALANT	12 LBS 16"x16"x10"
2007-BULK-120	120 STRUT KNUCKLEHEADS WITH UNIVERSAL BASES	85 LBS 31"x21"x19"

*OTHER QUANTITIES AVAILABLE UPON REQUEST



Strut KnuckleHeads are used to support large ammonia lines on a food processing plant. In this instance, two Strut KnuckleHeads are used with a length of strut channel and a pipe receiver to build vertically. KnucklePads are used as slip sheets.



Free standing Strut KnuckleHead Extensions are used to support runs of two 4" pipes on an EPDM re-roofing project. The Strut KnuckleHeads are bolted to strut channel. KnucklePads are used as slip sheets.

Strut KnuckleHead

Shown with safety yellow KnucklePad slip sheet**

**Sold Separately.

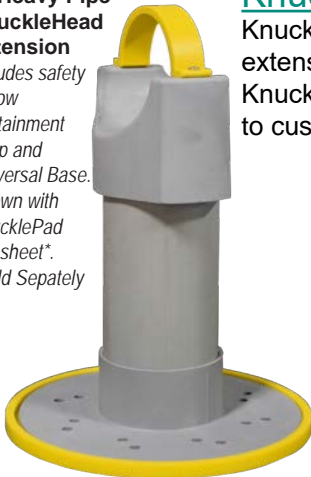
**ACCESSORIES****PKG. WEIGHT/DIM**

A-2001-PAD	SAFETY YELLOW SLIP SHEET	12 PK. (4 LBS. 13"x10"x10") 100 PK. (30 LBS. 15"x15"x15")
3004-GL-GR-12PK	12 CTGS. OF GREEN LINK ADHESIVE /SEALANT	13 LBS 13"x7"x8"
3004-GL-GR-24PK	24 CTGS. OF GREEN LINK ADHESIVE /SEALANT	26 LBS 13"x13"x9"

QUANTITY GUIDE: USE 1 CARTRIDGE SEALANT FOR EVERY (6) UNIVERSAL BASES. **SEE INSTALLATION INSTRUCTIONS [HERE](#) AND CONSULT ROOFING MANUFACTURER PRIOR TO PENETRATING ROOF.**

**8" Heavy Pipe
KnuckleHead
Extension**

*includes safety
yellow
containment
strap and
Universal Base.
Shown with
KnucklePad
slip sheet*.
Sold Separately



KnuckleHead Extensions

KnuckleHead Extensions are available for applications exceeding base height. Stock extensions are available in two standard sizes with custom height available upon request. KnuckleHead Extensions **ARE NOT** height adjustable by turning the head, extension must to custom cut to adjust height.

Heavy Pipe KnuckleHead Extensions with Universal Base

HEAVY PIPE KNUCKLEHEAD EXTENSIONS		PKG/ WEIGHT/DIM
EXT-08-2011	1 HEAVY PIPE KNUCKLEHEAD ON 8" HEIGHT EXTENSION	3 LBS 13"x10"x10"
EXT-12-2011	1 HEAVY PIPE KNUCKLEHEAD ON 12" HEIGHT EXTENSION	3 LBS 16"x12"x11"

Heavy Pipe KnuckleHead Extensions with Big Base

Big Bases are recommended for free-standing applications over 12" in height.

HEAVY PIPE KNUCKLEHEAD EXTENSIONS WITH BIG BASE		PKG. WEIGHT/DIM
EXT-08-2011-BB	1 HEAVY PIPE KNUCKLEHEAD ON 8" HEIGHT EXTENSION WITH BIG BASE	5.5LBS 15"x15"x15"
EXT-12-2011-BB	1 HEAVY PIPE KNUCKLEHEAD ON 12" HEIGHT EXTENSION WITH BIG BASE	6 LBS 19"x19"x19"

**12" Heavy Pipe
KnuckleHead
Extension**

*includes safety
yellow containment
strap and Big Base.
Big Base has an
integrated safety
yellow slip sheet.*



**8" Lite Pipe
KnuckleHead
Extension**

*includes safety
yellow
containment
cap (not pictured)
and Universal
Base. Shown with
KnucklePad
slip sheet*.
Sold Separately



Lite Pipe KnuckleHead Extensions with Universal Base

LITE PIPE KNUCKLEHEAD EXTENSIONS		PKG. WEIGHT/DIM
EXT-08-2006	1 LITE PIPE KNUCKLEHEAD ON 8" HEIGHT EXTENSION	2 LBS 13"x10"x10"
EXT-12-2006	1 LITE PIPE KNUCKLEHEAD ON 12" HEIGHT EXTENSION	3 LBS 16"x12"x11"

Lite Pipe KnuckleHead Extensions with Big Base

Big Bases are recommended for free-standing applications over 12" in height.

LITE PIPE KNUCKLEHEAD EXTENSIONS WITH BIG BASE		PKG. WEIGHT/DIM
EXT-08-2006-BB	1 LITE PIPE KNUCKLEHEAD ON 8" HEIGHT EXTENSION WITH BIG BASE	5 LBS 15"x15"x15"
EXT-12-2006-BB	1 LITE PIPE KNUCKLEHEAD ON 12" HEIGHT EXTENSION WITH BIG BASE	6 LBS 15"x15"x15"

**12" Lite Pipe
KnuckleHead
Extension**

*includes safety
yellow containment
cap and Big Base.
Big Base has an
integrated safety
yellow slip sheet.*



KnuckleHead Extensions

KnuckleHead Extensions are available for applications exceeding base height. Stock extensions are available in two standard sizes with custom height available upon request. KnuckleHead Extensions **ARE NOT** height adjustable by turning the head, extension must to custom cut to adjust height.



8" Strut-KnuckleHead Extension shown supporting a 1 5/8" strut channel*. Includes Universal Base. Shown with KnucklePad slip sheet*.

*Sold Separately

Strut KnuckleHead Extensions with Universal Base

STRUT KNUCKLEHEAD EXTENSIONS		PKG. WEIGHT/DIM
EXT-08-2007	1 STRUT KNUCKLEHEAD ON 8" HEIGHT EXTENSION	3 LBS 13"x10"x10"
EXT-12-2007	1 STRUT KNUCKLEHEAD ON 12" HEIGHT EXTENSION	3 LBS 16"x12"x11"
KNUCKLEHEAD STRUT EXTENSIONS ARE NOT DESIGNED TO SUPPORT HVAC EQUIPMENT		

Strut KnuckleHead Extensions with Big Base

Big Bases are recommended for free-standing applications over 12" in height. **Not for Equipment Supports.**



12" Strut KnuckleHead Extension on a Big Base. Designed to accommodate all strut channel sizes. Big Base has an integrated safety yellow slip sheet.

STRUT KNUCKLEHEAD EXTENSIONS WITH BIG BASE		PKG. WEIGHT/DIM
EXT-08-2007-BB	1 STRUT KNUCKLEHEAD ON 8" HEIGHT EXTENSION WITH BIG BASE	6 LBS 15"x15"x15"
EXT-12-2007-BB	1 STRUT KNUCKLEHEAD ON 12" HEIGHT EXTENSION WITH BIG BASE	8 LBS 15"x15"x15"
KNUCKLEHEAD STRUT EXTENSIONS ARE NOT DESIGNED TO SUPPORT HVAC EQUIPMENT		

TELESCOPING STANCHION KNUCKLEHEAD

PART 6200

Telescoping Stanchion KnuckleHeads

Telescoping Stanchion KnuckleHeads are available for building framing up vertically, where standard Stanchion KnuckleHead heights are not applicable. Telescoping Stanchion KnuckleHeads are made to heights of 8" or 12" nominal, using 1-7/8" telescoping strut. This allows for 3 (8") or 4 (12") attachment holes which can receive 1-5/8" standard slotted strut channels.



Telescoping Stanchion KnuckleHeads Available in 8" and 12" nominal heights for building vertically with strut channel.

STANCHION KNUCKLEHEADS		PKG. WEIGHT/DIM
6200X-8"T-EA	1 STANCHION KNUCKLEHEAD ON UNIVERSAL BASE	6 LBS 23"x15"x7"
6200X-12"T-EA	4 STANCHION KNUCKLEHEADS ON UNIVERSAL BASES	21 LBS 51"x13"x6"



12" Nominal Telescoping Stanchion KnuckleHeads are fastened to 1-5/8" strut channels for building vertically.

Stanchion KnuckleHead

(pictured from Left to Right).
Stanchion Knuckle-Head, on Big Base with integrated 24" vertical strut channel and vinyl end cap.

Stanchion KnuckleHead on Universal Base with integrated 24" vertical strut channel and white vinyl end cap.



Stanchion KnuckleHead

The Stanchion KnuckleHead features a 24" length of strut molded into the head, allowing for custom adjustments when building with strut. This KnuckleHead is designed to support HVAC equipment, large pipes and duct work. Stanchion KnuckleHeads are height adjustable from 5" to 24" depending on height requirements, and feature an integrated gasket to create a weather-proof seal. Additional hardware for mounting is available upon request.

STANCHION KNUCKLEHEADS

PKG.WEIGHT/DIM

6200U	1 STANCHION KNUCKLEHEAD ON UNIVERSAL BASE	6 LBS 23"x15"x7"
6200U-4Set	4 STANCHION KNUCKLEHEADS ON UNIVERSAL BASES	21 LBS 51"x13"x6"

STANCHION KNUCKLEHEADS ON BIG BASE

6200B	1 STANCHION KNUCKLEHEAD ON BIG BASE	9 LBS 23"x15"x7"
6200B-4Set	4 STANCHION KNUCKLEHEADS ON BIG BASES	35 LBS 51"x13"x6"

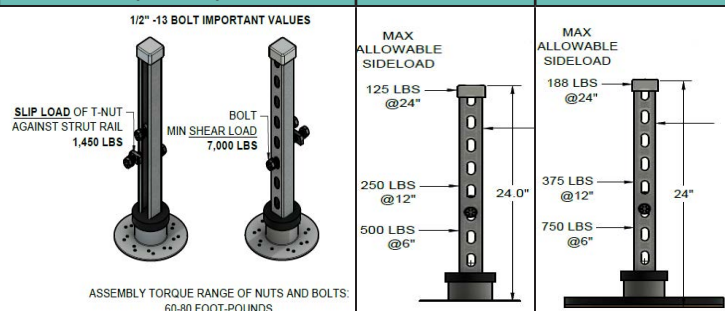
ACCESSORIES

PKG.WEIGHT/DIM

A-2001-PAD	SAFETY YELLOW SLIP SHEET	12 PK. (4 LBS. 13"x10"x10") 100 PK. (30 LBS. 15"x15"x15")
3004-GL-GR-12PK	12 CTGS. OF GREEN LINK ADHESIVE /SEALANT	13 LBS 13"x7"x8"
3004-GL-GR-24PK	24 CTGS. OF GREEN LINK ADHESIVE /SEALANT	26 LBS 13"x13"x9"
R2001-HW-1	1 90° BRACKET WITH 4 1/2-13 BOLTS, WASHERS AND NUTS	2 LBS 13"x10"x10"
R2001-HW-4	4 90° BRACKETS WITH 16 1/2-13 BOLTS, WASHERS AND NUTS	7 LBS 13"x10"x10"

STANCHION BASE PHYSICAL DATA

24" STANCHION	7" BASE	12" BASE
COMPRESSIONS (LBS)	2250	2250
TENSILE (LBS)	1000	1200
MOMENT @ 12" ELEVATION (LBS-FT)	250	375

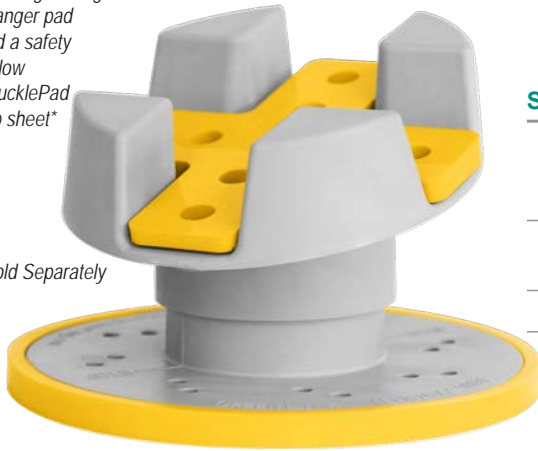


The Stanchion KnuckleHead offers superior strength and adjustability for supporting HVAC units, duct work, and pipe lines. Brackets can be attached to slotted or open side of strut channel for desired adjustability.



Solar KnuckleHead shown on a Universal Base with a 15 degree angle changer pad and a safety yellow KnucklePad slip sheet*

*Sold Separately



8" Solar KnuckleHead Extension Shown supporting a strut channel with a Universal Base and safety yellow KnucklePad slip sheet*.

*Slip sheet Sold Separately



12" Solar KnuckleHead Extension on Big Base. The Big Base is ideal for free-standing applications of 12 inches or higher.



Solar KnuckleHead

This KnuckleHead is designed to support solar arrays at a 15-degree angle. Each Solar KnuckleHead can support 600 lbs. of weight and are height adjustable from 2" to 3" from base to support point.

SOLAR KNUCKLEHEAD*

PKG.WEIGHT /DIM

2020-KIT-6	6 SOLAR KNUCKLEHEADS WITH UNIVERSAL BASES AND 2 CTGS. GREEN LINK ADHESIVE SEALANT	9 LBS 23"x15"x7"
2020-BULK-60	60 SOLAR KNUCKLEHEADS WITH UNIVERSAL BASES	59 LBS 31"x21"x22"

*OTHER QUANTITIES AVAILABLE UPON REQUEST

Solar KnuckleHead Extensions

KnuckleHead Extensions are available for applications exceeding base height. Stock extensions are available in three sizes with custom height available upon request. Extensions may be custom cut to meet alternative height requirements. KnuckleHead Extensions **ARE NOT** adjustable by turning the head, extensions must be cut to desired heights.

SOLAR KNUCKLEHEAD EXTENSIONS**

PKG. WEIGHT/DIM

EXT-08-2020-KIT	4 SOLAR KNUCKLEHEADS ON 8" HEIGHT EXTENSIONS WITH 1 CTG GLA/S	14 LBS 15"x15"x15"
EXT-12-2020-KIT	4 SOLAR KNUCKLEHEADS ON 12" HEIGHT EXTENSIONS WITH 1 CTG GL A/S	16 LBS 15"x15"x15"
EXT-18-2020-KIT	4 SOLAR KNUCKLEHEADS ON 18" HEIGHT EXTENSIONS WITH 1 CTG GL A/S	19 LBS 21"x21"x21"

**OTHER SIZES AVAILABLE UPON REQUEST

Strut KnuckleHead Extensions with Big Base

Big Bases are recommended for free-standing applications over 12" in height.

SOLAR KNUCKLEHEAD EXTENSIONS WITH BIG BASE*** PKG. WEIGHT/DIM

EXT-08-2020-BB	4 SOLAR KNUCKLEHEADS ON 8" HEIGHT EXTENSIONS WITH BIG BASE	30 LBS 19"x19"x19"
EXT-12-2020-BB	4 SOLAR KNUCKLEHEADS ON 12" HEIGHT EXTENSIONS WITH BIG BASE	32 LBS 19"x19"x19"
EXT-18-2020-BB	4 SOLAR KNUCKLEHEADS ON 18" HEIGHT EXTENSIONS WITH BIG BASE	34 LBS 31"x21"x16"

***OTHER SIZES AVAILABLE UPON REQUEST

ACCESSORIES

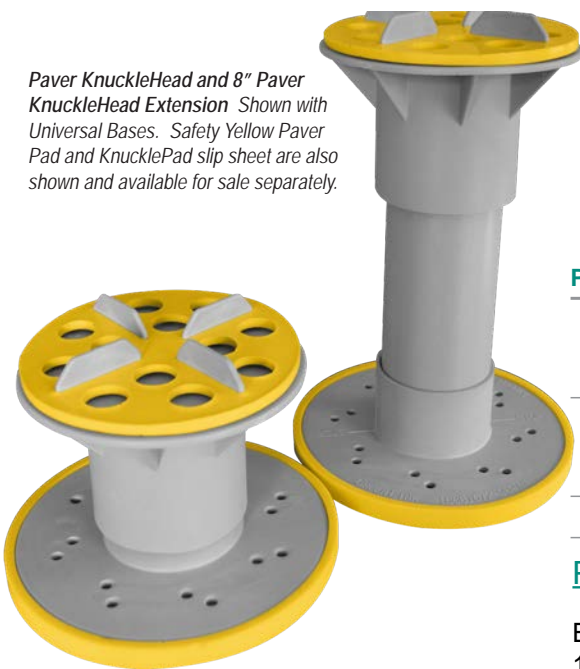
PKG. WEIGHT/DIM

A-2001-PAD	SAFETY YELLOW SLIP SHEET	12 PK. (4 LBS. 13"x10"x10") 100 PK. (30 LBS. 15"x15"x15")
A-2020-WEDGE	SAFETY YELLOW 5-DEGREE ANGLE PAD	.2 LBS
3004-GL-GR-12PK	12 CTGS. OF GREEN LINK ADHESIVE /SEALANT	13 LBS 13"x7"x8"
3004-GL-GR-24PK	24 CTGS. OF GREEN LINK ADHESIVE /SEALANT	26 LBS 13"x13"x9"

Paver KnuckleHead Shown with Universal Base. Safety yellow Paver Pad and KnucklePad slip sheet are also shown and available for sale separately.



Paver KnuckleHead and 8" Paver KnuckleHead Extension Shown with Universal Bases. Safety Yellow Paver Pad and KnucklePad slip sheet are also shown and available for sale separately.



12" Paver KnuckleHead Extension Shown with the Big Base (12" Diameter). The Big Base is ideal for free-standing applications of 12" or higher.



Paver KnuckleHead

The Paver KnuckleHead is designed to support pavers and walkways. Each Paver KnuckleHead is able to support up to 600 pounds of weight and are height adjustable from 3.75" to 4.85" from base to support point.

PAVER KNUCKLEHEAD*

		WEIGHT/DIM
2005-KIT-6	6 PAVER KNUCKLEHEADS WITH UNIVERSAL BASE AND 2 CTGS. GREEN LINK ADHESIVE/SEALANT	9 LBS 23"x15"x7"
2005-BULK-50	50 PAVER KNUCKLEHEADS WITH UNIVERSAL BASE	64 LBS 31"x21"x16"

*OTHER QUANTITIES AVAILABLE UPON REQUEST

Paver KnuckleHead Extensions

KnuckleHead Extensions are available for applications exceeding standard height. Stock extensions of 8" and 12" are available, with custom height available upon request. KnuckleHead Extensions **ARE NOT** adjustable by turning the head, the extension must to cut to desired heights.

PAVER KNUCKLEHEAD EXTENSIONS**

		PKG. WEIGHT/DIM
EXT-08-2005-KIT	4 PAVER KNUCKLEHEADS ON 8" HEIGHT EXTENSIONS WITH 1 CTG GL A/S	10 LBS 15"x15"x15"
EXT-12-2005-KIT	4 PAVER KNUCKLEHEADS ON 12" HEIGHT EXTENSION WITH 1 CTG GL A/S	12 LBS 15"x15"x15"

**OTHER SIZES AVAILABLE UPON REQUEST

Paver KnuckleHead Extensions with Big Base

Big Bases are recommended for free-standing applications over 12" in height.

PAVER KNUCKLEHEAD EXTENSIONS WITH BIG BASE**

		PKG. WEIGHT/DIM
EXT-08-2005-BB	1 PAVER KNUCKLEHEAD ON 8" HEIGHT EXTENSION WITH BIG BASE	6 LBS 15"x15"x15"
EXT-12-2005-BB	1 PAVER KNUCKLEHEAD ON 12" HEIGHT EXTENSION WITH BIG BASE	8 LBS 15"x15"x15"

**OTHER SIZES AVAILABLE UPON REQUEST

ACCESSORIES

		PKG. WEIGHT/DIM
A-2001-PAD	SAFETY YELLOW SLIP SHEET	12 PK. (4 LBS. 13"x10"x10") 100 PK. (30 LBS. 15"x15"x15")
A-2005-PAD	SAFETY YELLOW PAVER TOP PAD	.2 LBS
3004-GL-GR-12PK	12 CTGS. OF GREEN LINK ADHESIVE /SEALANT	13 LBS 13"x7"x8"
3004-GL-GR-24PK	24 CTGS. OF GREEN LINK ADHESIVE /SEALANT	26 LBS 13"x13"x9"

*Pedestal KnuckleHead
Shown on Universal Base.
Pedestal KnuckleHeads
have a tapped center
hole for attaching to heat
pumps and other HVAC
equipment. Pictured with
the safety yellow Knuck-
leHead slip sheet*.
Sold Separately



Pedestal KnuckleHead

The Pedestal KnuckleHead is designed to support mechanical equipment. A tapped center hole allows for easy attachment of the HVAC unit. The Pedestal Support is height adjustable from 3.75" to 4.85"

Available in 1/2" or 3/8" thread sizes.

PEDESTAL KNUCKLEHEAD

PKG. WEIGHT/DIM

6001AV/PAD	4 PEDESTAL SUPPORT KNUCKLEHEADS WITH HARDWARE, ANTI-VIBRATION PADS AND KNUCKLEPADS	7.5 LBS 10"x10"x13"
6001-AVGLAS	4 PEDESTAL SUPPORT KNUCKLEHEADS WITH HARDWARE, ANTI-VIBRATION PADS AND GREEN LINK ADHESIVE/SEALANT	7 LBS 10"x10"x13"
6001-KP	4 PEDESTAL SUPPORT KNUCKLEHEADS WITH HARDWARE AND KNUCKLEPADS	6 LBS 10"x10"x13"
6001-GLAS	4 PEDESTAL SUPPORT KNUCKLEHEADS WITH HARDWARE AND GREEN LINK ADHESIVE/SEALANT	5.5 LBS 10"x10"x13"



(4) Pedestal KnuckleHeads are pictured supporting a heat pump. The tapped center hole allows for bolt attachment. Optional safety yellow KnucklePads provide the necessary slip sheet for loose laid application.





*Green Link Adhesive/Sealant
(2) 10.01 oz. cartridges of Green Link
Adhesive/Sealant, compatible with all
KnuckleHead products.*



Green Link Adhesive/Sealant application. In this instance the KnuckleHead will be bonded with adhesive to a fully adhered membrane.

Green Link Adhesive/Sealant

Green Link Adhesive/Sealant is a polyether-based, moisture-cure formula that has been proven in the construction industry over many years. The adhesive is high performing and bonds to a wide range of roofing membranes including PVC, EPDM, Mod Bit and TPO*. It provides up to 275 psi bond strength between the Universal Base and single-ply or built up membranes.

Green Link Adhesive/Sealant is 100% solids and cures when it come into contact with moisture; there is no shrinkage and it can be applied directly in ponding water.

Green Link Adhesive/Sealant is entirely safe with no risk of fire, explosion, or toxic exposure to workers or building inhabitants. It meets the requirements of California Regs: CARB, BAAQMD and SCAQMD. It does not contain cancer-causing chemicals listed in California Proposition 65 and the VOC content is less than 15 per grams per liter.

*Primer must be used when bonding to TPO membranes

Quantity Guide

1 cartridge of Green Link Adhesive/Sealant is recommended for each 6 KnuckleHeads on Universal Bases.
1 cartridge of Green Link Adhesive/Sealant is recommended for each 4 KnuckleHeads on Big Bases.

ADHESIVE/SEALANT	PKG. WEIGHT/DIM	
3004-GLGR-EA	1 CTG. GREEN LINK ADHESIVE/SEALANT	1 LB
3004-GLGR-12PK	12 CTGS. GREEN LINK ADHESIVE/SEALANT	13 LBS 13"x7"x8"
3004-GLGR-24PK	24 CTGS. GREEN LINK ADHESIVE/SEALANT	26 LBS 13"X13"X9"



[Green Link Adhesive/Sealant
SDS](#)

MetalHead with pad
Front and oblique views of the MetalHead with adhered black PEF pad. Ideal for loose laid applications.



MetalHead without pad
Front and underside views of the MetalHead without a pad. Ideal if MetalHead is being bonded to a fully adhered membrane with Green Link Adhesive/Sealant.



MetalHead

The MetalHead is a strong and durable support system for pipes, cable management, duct and HVAC/R equipment. The aluminium triangular design provides a sturdy, 50 sq.-in. base, with a built in 1-5/8" x 1-5/8" strut channel top, compatible with all standard strut hardware and accessories. The MetalHead features 100-mil aluminium walls, capable of supporting 10,000 lbs. Its hard anodized and clear finish resists oxidation, salt spray and mild acids found in ponding water. The (optional) black PEF pad protects vulnerable surfaces from abrasion and is compatible with PVC, TPO, EPDM and asphalt-based roof membranes. The MetalHead will last for years and can be reused or recycled. Patent Pending. Made in the USA. Twenty-year limited warranty.

METALHEADS

PKG. WEIGHT/DIM

2015-9.5" w/PE Pad 8 ct.	8 METALHEADS WITH ADHERED BLACK PEF SLIP SHEET	17 LBS 16"x12"x11"
2015-9.5"No Pad Box 8 ct.	8 METALHEADS WITHOUT SLIP SHEET	14 LBS 16"x12"x11"

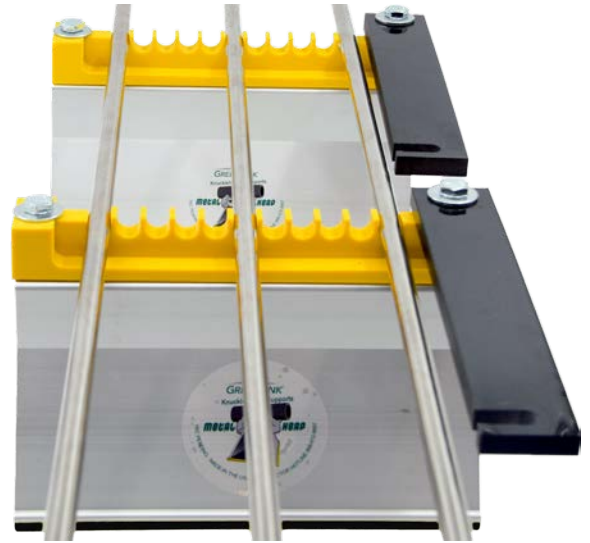
METALHEAD DIMENSIONS & WEIGHT EACH: 5"(H) x 5"(W) x 9.5"(L) 2 LBS.



MetalHeads with integrated slipsheets support a lines on a rooftop. The photo on the left shows MetalHeads and Snap-N-Strut clamps. The right-hand photo shows MetalHeads using pipe clamps provided by others.



Pipe Guides
Shown are both models of pipe guide with MetalHeads. Pipe Guides can support (7) 1" pipes or (11) .5" pipes. The containment lid swings open for an easy install. Bolts, channel nuts, and washers are included with the part.



METALHEAD/STRUT ACCESSORIES

PKG. WEIGHT/DIM

2016-MH-1/2-8	8 METALHEADS (PAD) WITH 9.5" PIPE GUIDES FOR UP TO (11) 3/8-1/2" PIPES	31 LBS 16"x12"x11"
2016-MH-1-8	8 METALHEADS (PAD) WITH 9.5" PIPE GUIDES FOR UP TO (7) 1" PIPES	31 LBS 16"x12"x11"
2015-SK-1/2-8	8 STRUT KNUCKLEHEADS WITH 9.5" STRUT CHANNEL AND PIPE GUIDES FOR UP TO (11) 3/8-1/2" PIPES	27 LBS 15"x15"x15"
2016-SK-1-8	8 STRUT KNUCKLEHEADS WITH 9.5" STRUT CHANNEL AND PIPE GUIDES FOR UP TO (7) 1" PIPES	27 LBS 15"x15"x15"
1129-12-16-P	SNS BLACK NYLON STRUT CLAMP FOR 1/4" TO 5/8" PIPES	
1129-21-24-P	SNS BLACK NYLON STRUT CLAMP FOR 1/2" TO 7/8" PIPES	
1129-30-34-P	SNS BLACK NYLON STRUT CLAMP FOR 1" TO 1-1/4" PIPES	
1129-48-54-P	SNS BLACK NYLON STRUT CLAMP FOR 1-1/2" PIPES	
1129-56-63-P	SNS BLACK NYLON STRUT CLAMP FOR 2" PIPES	
1129-66-76-P	SNS BLACK NYLON STRUT CLAMP FOR 2 1/2 - 2 5/8" PIPES	
1129-79-93-P	SNS BLACK NYLON STRUT CLAMP FOR 3" TO 3-1/2" PIPES	
1129-101-115-P	SNS BLACK NYLON STRUT CLAMP FOR 3-1/2" TO 4" PIPES	
1129-SNS-STRUT NUT	SNS STRUT NUT	



Pipe Guides

Pipe Guides are available with Green Link's Strut KnuckleHead and MetalHead. Above are the pipes guides adhered and bolted to a Strut KnuckleHead. Both configurations of Pipe Guide come with all attachment hardware, and a simple, swinging containment top.

Snap-N-Strut
These glass-reinforced nylon pipe clamps are economical and very simple to use. Available in a variety of sizes.





6101U-3x4
Front and side views of the Low Profile KnuckleHead Support Kit. This kit features (4) Universal Bases, (2) 4' support rails and (2) 3' equipment support rails. The unit supports a heat pump. All hardware shown is included in the Support Kit.



Low Profile KnuckleHead Support Kit

The Low Profile KnuckleHead Support Kit is designed to support HVAC units requiring elevation of 6"-7". The unit features height adjustability of 1" by rotating Strut KnuckleHeads and width adjustable by moving equipment support rails. Additional height adjustment can be achieved by using low profile or double strut. This kit comes with all hardware and pieces required to support HVAC equipment. Standard sizes are listed below, additional sizes are available upon request.

LOW PROFILE KNUCKLEHEAD SUPPORT KIT*

PKG. WEIGHT/DIM

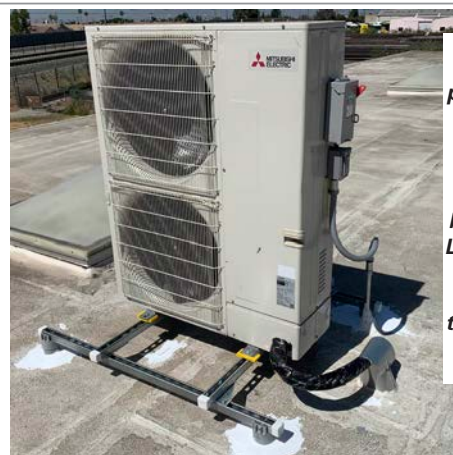
6101U-3X3	3'x3' MECHANICAL SUPPORT KIT- UNIVERSAL BASE	32 LBS 52"x14"x6"
6101B-3X3	3'x3' MECHANICAL SUPPORT KIT-BIG BASE	46 LBS 52"x14"x6"
6101U-3x4	3'x4' MECHANICAL SUPPORT KIT-UNIVERSAL BASE	36 LBS 52"x14"x6"
6101B-3X4	3x4' MECHANICAL SUPPORT KIT-BIG BASE	50 LBS 52"x14"x6"
6101U-4x4	4'x4' MECHANICAL SUPPORT KIT-UNIVERSAL BASE	40 LBS 52"x14"x6"
6101B-4X4	4'x4' MECHANICAL SUPPORT KIT-BIG BASE	54 LBS 52"x14"x6"

*OTHER SIZES AVAILABLE UPON REQUEST

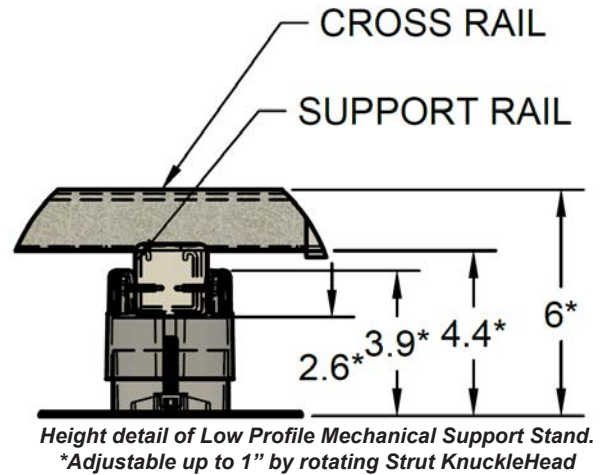
** ADD "-EM" TO END OF PART NUMBER TO INCLUDE ELECTRICAL MOUNT (PICTURED BELOW)



6101U-4x4-EM
A condensing unit is supported on a 4'x4' low profile Knuckle-Head stand. This stand features the optional Electrical Mount** feature, an easy way to affix the shut off box to the KnuckleHead frame.



A 4'x4' frame supports a heat pump on a modified bitumen roof. In this instance the frame is mechanically fastened and bonded with Green Link Adhesive/Sealant, the installing contractor chose to cover bases with sealant.

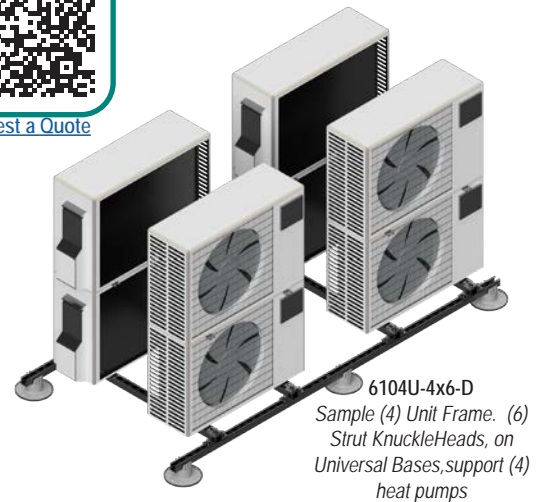


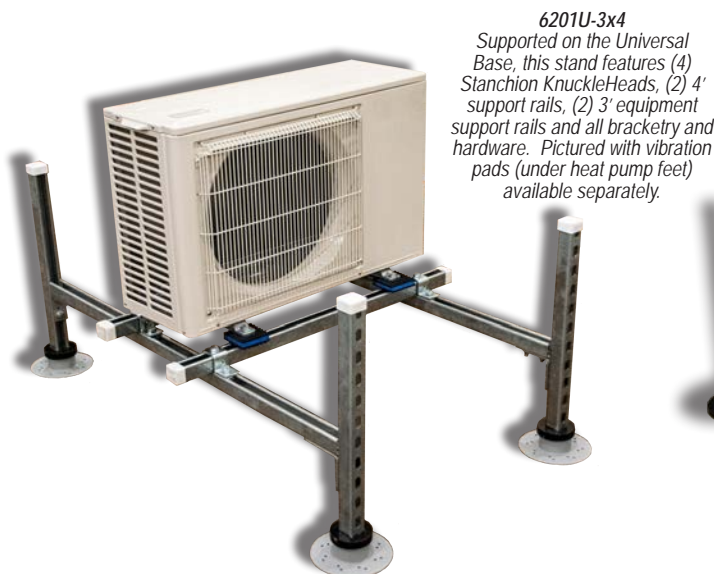
Multi Unit Low Profile Mechanical Support Kit

These Low Profile frames utilize the Strut KnuckleHead. Kits contain strut channel, hardware to affix Strut KnuckleHeads to channel, and hardware to build the frame. Several examples of Green Link's multi-unit, low profile, solutions are pictured here.

The Strut KnuckleHead allows for 1" of height adjustment for leveling the equipment installation. Base height with 1-5/8" strut rails are detailed in the drawing on the upper right of the page.

For multi-unit Frame options please contact Green Link's team at 888-672-9897 (option 1, for sales) in order to evaluate the roofplan, unit sizing, and spacing requirements to offer the best solution for the individual project.





Elevated KnuckleHead Support Kit

The Elevated KnuckleHead Support Kit is a single source solution for supporting HVAC equipment. The single unit support kit includes (4) Stanchion KnuckleHeads which allow unit height to be adjusted from 7" to 24" depending upon height requirements, and all strut and hardware required for mounting units. This standard kit is available in the sizes below but can be custom made to meet specific needs or create banks of units. This kit is available with the Universal or Big Base. The Big Base is recommended for free-standing units over 12" in height.

ELEVATED KNUCKLEHEAD SUPPORT KIT*

PKG. WEIGHT/DIM

6201U-3x3	3'x3' HEIGHT ADJUSTABLE UNIT WITH UNIVERSAL BASE	52 LBS 52"x14"x6"
6201B-3x3	3'x3' HEIGHT ADJUSTABLE UNIT WITH BIG BASE	66 LBS 52"x14"x6"
6201U-3x4	3'x4' HEIGHT ADJUSTABLE UNIT WITH UNIVERSAL BASE	56 LBS 52"x14"x6"
6201B-3x4	3x4 HEIGHT ADJUSTABLE UNIT WITH BIG BASE	70 LBS 52"x14"x6"
6201U-4x4	4x4 HEIGHT ADJUSTABLE UNIT WITH UNIVERSAL BASE	60 LBS 52"x14"x6"
6201B-4x4	4x4 HEIGHT ADJUSTABLE UNIT WITH BIG BASE	74 LBS 52"x14"x6"
6201U-4x5	4x5 HEIGHT ADJUSTABLE UNIT WITH UNIVERSAL BASE	64 LBS 60"x14"x6"
6201B-4x5	4x5 HEIGHT ADJUSTABLE UNIT WITH BIG BASE	78 LBS 60"x14"x6"

*OTHER SIZES AVAILABLE UPON REQUEST

**ADD "-EM" TO END OF PART NUMBER TO INCLUDE ELECTRICAL MOUNT (PICTURED BELOW)





Multi-Unit Elevated Mechanical Supports

A Multi-Unit Support using the Stanchion KnuckleHead offers the same adjustability and strength of the single unit. The multi-unit frame can be a great solution for saving space on rooftops. The larger frame footprint may also give greater wind stability.

Several examples of Green Link's multi-unit solutions are pictured here.

For multi-unit Frame options please contact Green Link's team at 888-672-9897 (option 1, for sales) in order to evaluate the roofplan, unit sizing, and spacing requirements to offer the best solution for the individual project.

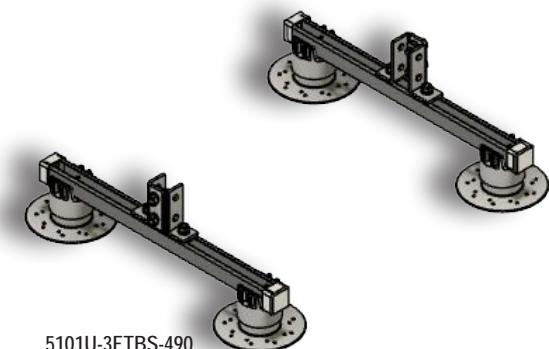


5100 Series Pipe and Duct Stands

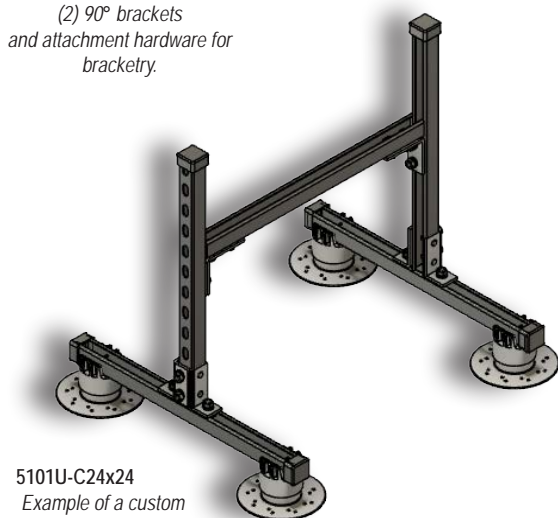
These adjustable frames provide an incredibly stable base for ductwork, large piping, and runs of pipes. This frames utilizes the Strut KnuckleHead, which has one inch of inherent adjustability to easily accomodate for leveling on most roof slopes. Kits are available standard with (4) Strut KnuckleHeads, (2) spanning rails, and (2) 8 hole angle changing brackets for building up. As well as (2) 90° brackets for placing supporting and containing rails.

Crossrails to be provided on site.

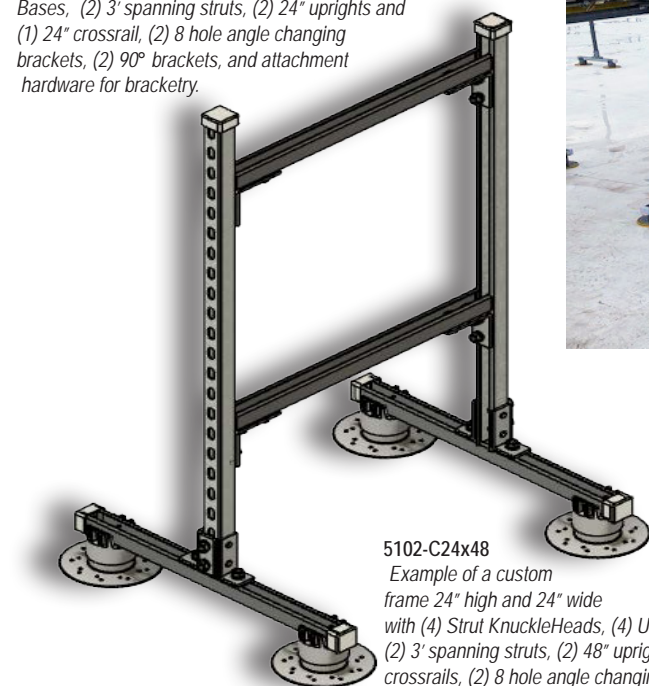
Custom kits with all strut rails and top containment rails are available on request.



5101U-3FTBS-490
(4) Strut KnuckleHeads and
(4) Universal Bases, with (2)
3' spanning struts, (2) 8 hole
angle changing brackets and
(2) 90° brackets
and attachment hardware for
bracketry.



5101U-C24x24
Example of a custom
frame 24" high and 24" wide
with (4) Strut KnuckleHeads and (4) Universal
Bases, (2) 3' spanning struts, (2) 24" uprights and
(1) 24" crossrail, (2) 8 hole angle changing
brackets, (2) 90° brackets, and attachment
hardware for bracketry.



5102-C24x48
Example of a custom
frame 24" high and 24" wide
with (4) Strut KnuckleHeads, (4) Universal Bases,
(2) 3' spanning struts, (2) 48" uprights, (2) 24"
crossrails, (2) 8 hole angle changing brackets,
(4) 90° brackets, and attachment hardware for
bracketry.

5100 SERIES PIPE AND DUCT STANDS**

WEIGHT EA.

5101U-3FTBS-490	(4) STRUT KNUCKLEHEADS ON UNIVERSAL BASES, WITH (2) 3' SPANNING RAILS, (2) 8 HOLE ANGLE CHANGING BRACKETS, (2) 90° BRACKETS AND ALL HARDWARE FOR BRACKETRY. <i>STRUT FOR UPRIGHTS AND CROSSRAIL PROVIDED SEPARATLY.</i>	20.4 LBS
5102-3FTBS-490	(4) STRUT KNUCKLEHEADS ON UNIVERSAL BASES, WITH (2) 3' SPANNING RAILS, (2) 8 HOLE ANGLE CHANGING BRACKETS, (4) 90° BRACKETS AND ALL HARDWARE FOR BRACKETRY. <i>STRUT FOR UPRIGHTS AND CROSSRAILS PROVIDED SEPARATLY.</i>	23.3 LBS

**OTHER SIZES AVAILABLE UPON REQUEST



5101 SUPPORTS IN A VARIETY OF
CUSTOM SIZES SUPPORT DUCTS
AND AMMONIA LINES ON A
PROCESSING PLANT. PICTURED WITH
KNUCKLEPAD SLIP SHEETS.





5201B-30"-C30x48 STANDS
SUPPORT WATER LINES ON A
PUBLIC BUILDING USING ROLLER
SUPPLIED BY OTHERS

5200 Series Pipe and Duct Stands

These Stanchion KnuckleHead frames are an excellent way to support ductwork or runs of multiple pipes at a standard height of up to 24". Kits are available standard with 24" stanchions and brackets, with crossrails to be provided on site. Custom kits with all strut rails, top containment rails and/or modified height Stanchion KnuckleHeads are available on request.

5200 SERIES PIPE AND DUCT STANDS***

WEIGHT EA.

5201U-24"-HDW	(2) 24" STANCHION KNUCKLEHEADS ON UNIVERSAL BASES WITH (2) 90° BRACKETS AND ATTACHMENT HARDWARE. CROSSRAILS PROVIDED SEPERATELY	5.8 LBS
5201B-24"-HDW	(2) 24" STANCHION KNUCKLEHEADS ON UNIVERSAL BASES WITH (2) 90° BRACKETS AND ATTACHMENT HARDWARE. CROSSRAILS PROVIDED SEPERATELY	9.25 LBS

***OTHER SIZES AVAILABLE UPON REQUEST

	5201U-24"-HDW ← (2) 24" height Stanchion KnuckleHeads and (2) Universal Bases, with (2) 90 degree brackets and attachment hardware for bracketry.	5201B-24"-HDW → (2) 24" height Stanchion KnuckleHeads and (2) 12" Big Bases, with (2) 90 degree brackets and attachment hardware for bracketry.	
	5201U-24"-C24x24 ← An Example of a Custom Kit. (2) 24" height Stanchion KnuckleHeads and (2) Universal Bases, with (2) 90 degree brackets and attachment hardware for bracketry, includes (1) 24" strut cross rail.	5201B-24"-C24x24 → An Example of a Custom Kit. (2) 24" height Stanchion KnuckleHeads and (2) Big Bases, with (2) 90 degree brackets and attachment hardware for bracketry, includes (1) 24" strut cross rail.	
	5202U-24"-C24x24 ← An Example of a Custom Kit. (2) 24" height Stanchion KnuckleHeads and (2) Universal Bases, with (4) 90 degree brackets and attachment hardware for bracketry, includes (2) 24" strut crossrails.	5202B-24"-C24x24 → An Example of a Custom Kit. (2) 24" height Stanchion KnuckleHeads and (2) Big Bases, with (4) 90 degree brackets and attachment hardware for bracketry, includes (2) 24" strut crossrails.	

A-2001-PAD



KnucklePads

KnucklePads are safety yellow urethane slip sheets which are excellent in loose laid applications. KnucklePads are optional but offer a professional look with the benefits of being both a required slip sheet and a vibration dampener.

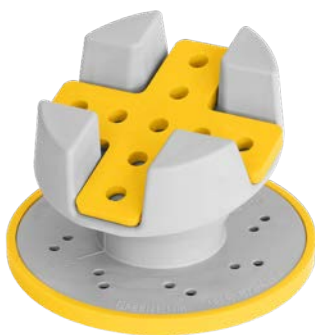
A-2005-PAD



Paver Pad

The Paver Pad is an pad that is designed to be used with the Paver KnuckleHead.

A-2020-WEDGE



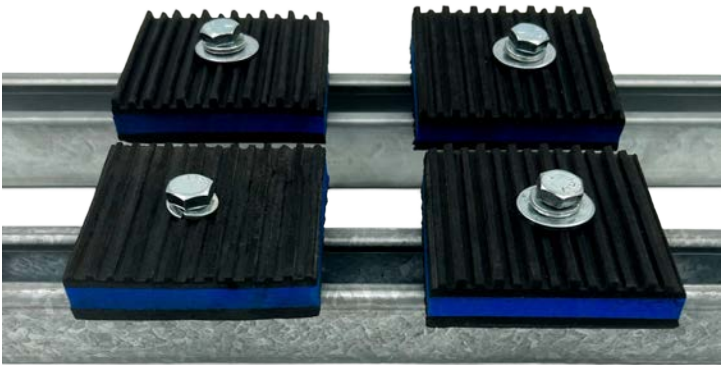
Solar Wedge

The Solar Wedge allows for a 5-degree adjustment in either direction when used in conjunction with the Solar KnuckleHead. The Solar Wedge consists of safety yellow urethane.

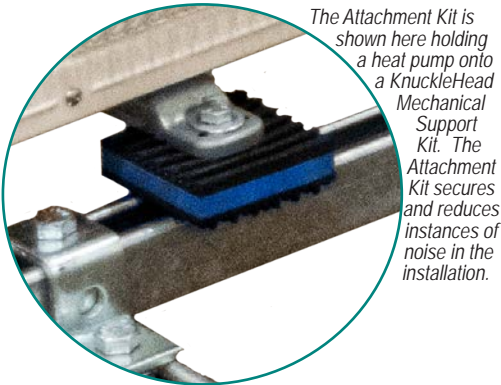
ACCESSORIES

WEIGHT EA.

A-2001-PAD	SAFETY YELLOW SLIP SHEET	.3 LB
A-2005-PAD	SAFETY YELLOW PAVER PAD	.2 LB
A-2020-WEDGE	± 5 DEGREE ANGLE CHANGER FOR SOLAR KNUCKLEHEAD	.2 LB
6000-AV	(4) 3"X3" EVA FOAM RUBBER PADS WITH BOLTS, WASHERS, AND CHANNEL NUTS FOR ATTACHING HVAC UNITS TO FRAME	1.6 LBS



Attachment Kit
Contains (4) 3"x3" EVA Foam and Rubber pads, (4) 3/8-16" bolts, (4) washers, and (4) 3/8-16" channel nuts.

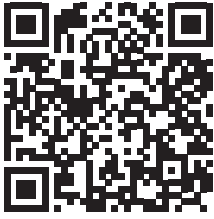


The Attachment Kit is shown here holding a heat pump onto a KnuckleHead Mechanical Support Kit. The Attachment Kit secures and reduces instances of noise in the installation.

GREEN LINK

ENGINEERING SUSTAINABILITY

KNUCKLE UP!



[Find a Sales Rep](#)



[KnuckleHead Warranty Card](#)



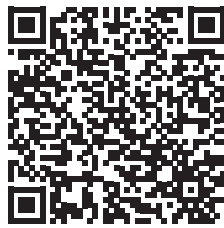
[Request a Quote](#)



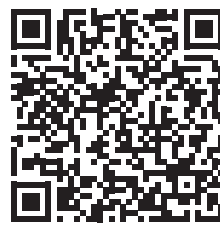
[MetalHead Warranty Card](#)



[Technical Guide](#)



[KnuckleHead Install Guide](#)



[6100 Series Install Guide](#)

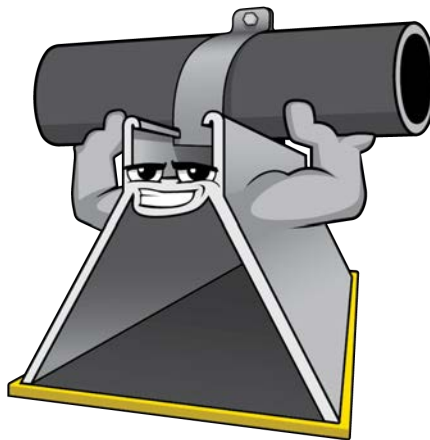


[6200 Series Install Guide](#)



[KnuckleHead Specification Data](#)

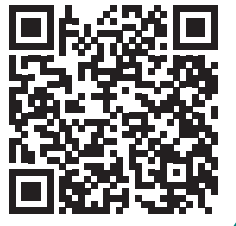
Made in the U.S.A.



[Product Videos](#)



[Green Link BIM Objects
Register for a free account](#)



[Shop Drawings](#)

<https://greenlinkengineering.com/>

CONTRACTOR HOTLINE: 1-888-672-9897