

KnuckleHead

Strut Support System

*Designed to support
struts and steel framing
for installation of heavy
equipment, solar panels, etc.*

*Each KnuckleHead is able
to support up to 600 lbs.*

*2.25" to 3.75" adjustable
height from base to
support point*

*Molded from GreenLink
Type 1 glass-reinforced
nylon resin. Strong, tough,
weatherproof, impervious
to freeze-thaw cycles*

*Base designed for
adhesive attachment or
mechanical fastening
for seismic/wind uplift
specification*

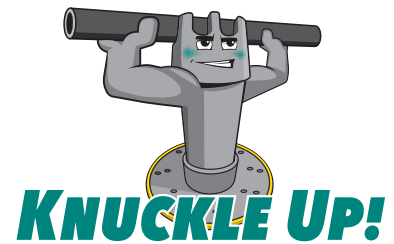
*Matte-finish nylon allows
bonding with adhesive*

GREEN LINK
ECO-ENGINEERING

269.216.9229 | 888.672.9897 | 5519 East Cork Street, Kalamazoo, MI 49048 USA | www.greenlinkengineering.com

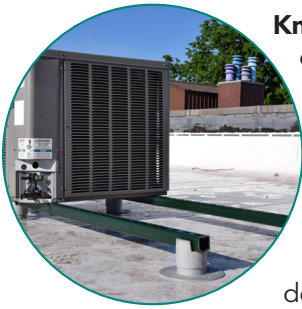
KnuckleHead

Strut Support System



KnuckleHead Strut Supports are designed for a wide variety of applications including solar arrays, air conditioning units, oversized pipes and other equipment that is to be positioned on commercial roofs. Strut Supports are designed to accommodate standard steel channel which can provide a framework for keeping equipment elevated off the roof's surface. Each KnuckleHead can support up to 600 lbs. Units can be spaced to evenly distribute the load of the heaviest equipment. KnuckleHead extensions are available for raising roof-mounted pipes and equipment to higher elevations up to 18". Strut supports are lightweight, so they add little to total roof load, preventing low points and depressions that invite ponding water and ice build-up.

Important points about The KnuckleHead Support System



KnuckleHeads will prevent damage caused by ponding water, wind, ice, flying debris or seismic events and protect the integrity of the roofing system including roof-mounted structures and equipment.

They are engineered with a Universal Base. A range of head designs are available depending on the particular support application needed.

KnuckleHeads can be attached directly to the roof substrate either mechanically combined with **GREEN LINK Adhesive/Sealant**, or with **GREEN LINK Adhesive/Sealant** alone.

Where the protocols of the original single-ply membrane manufacturer and/or warranty provider must be met, a Halo Target Flashing can be applied. MB, EPDM, PVC, and TPO Halo Target Flashings are available from **GREEN LINK**. Flashings are heat welded and/or adhered to the KnuckleHead base and to the roofing membrane.

In some applications, GREEN LINK Adhesive/Sealant by itself is sufficient to create a strong bond with more than 250 psi shear strength to ensure KnuckleHead integrity under high wind conditions or seismic events. Pipe straps

are available to provide additional security.

When mechanical fasteners are used, GREEN LINK Adhesive/Sealant should be applied around the perimeter of the base and on each screw head to prevent roof leaks caused by penetration.

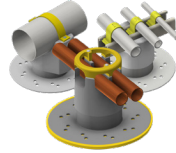
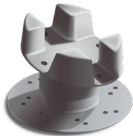
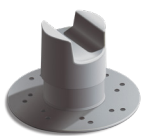
The base features 12 holes, allowing adhesive to squeeze out as the base is pressed onto the roof surface. This creates "adhesive rivets" which strengthen the bond.



KnuckleHead installations have been performing in the field for more than 10 years, with constant exposure to high temperatures, freeze-thaw cycles, UV exposure and stress, and they have shown no signs of deterioration.

GREEN LINK Adhesive/Sealant is environmentally safe and presents no toxic risk to contractors or building occupants. It is solvent-free, isocyanate-free, non-flammable and odorless.

A 10-year warranty is available. Please contact **GREEN LINK** for details.



GREEN LINK
ECO-ENGINEERING

269.216.9229 | 888.672.9897 | www.greenlinkengineering.com
5519 East Cork Street, Kalamazoo, MI 49048 USA