

KnuckleHead

Paver Support System

*Designed to support pavers,
ballast stone and walkways*

*Each KnuckleHead is able
to support up to 600 lbs.*

*3.75" to 4.85"
adjustable height from
base to support point*

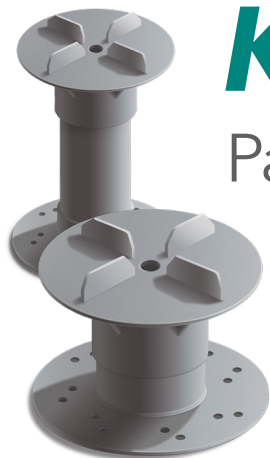
*Molded from
GreenLink Type 1
glass-reinforced
nylon resin. Strong,
tough, weatherproof,
impervious to freeze-
thaw cycles*

*Base designed for
adhesive attachment or
mechanical fastening
for seismic/wind uplift
specification*

*Matte-finish nylon allows
bonding with adhesive*

GREEN LINK
ECO-ENGINEERING

269.216.9229 | 888.672.9897 | 5519 East Cork Street, Kalamazoo, MI 49048 USA | www.greenlinkengineering.com



KnuckleHead

Paver Support System



KnuckleHead Paver Supports are designed for a wide variety of mechanical support applications including plaza decks, ballast, access flooring, roof walkways and similar applications. Each KnuckleHead can support up to 600 lbs. KnuckleHead extensions are available for raising pavers to higher elevations up to 18". Paver supports are lightweight, so they add little to total roof load, preventing low points and depressions that invite ponding water and ice build-up.

Important points about The KnuckleHead Support System



KnuckleHeads will prevent damage caused by ponding water, wind, ice, flying debris or seismic events and protect the integrity of the roofing system including roof-mounted structures and equipment.

They are engineered with a Universal Base. A range of head designs are available depending on the particular support application needed.

KnuckleHeads can be attached directly to the roof substrate either mechanically combined with *GREEN LINK* Adhesive/Sealant, or with *GREEN LINK* Adhesive/Sealant alone.

Where the protocols of the original single-ply membrane manufacturer and/or warranty provider must be met, a Halo Target Flashing can be applied. MB, EPDM, PVC, and TPO Halo Target Flashings are available from *GREEN LINK*. Flashings are heat welded and/or adhered to the KnuckleHead base and to the roofing membrane.

In some applications, *GREEN LINK* Adhesive/Sealant by itself is sufficient to create a strong bond with more than 250 psi shear strength to ensure KnuckleHead integrity

under high wind conditions or seismic events. Pipe straps are available to provide additional security.

When mechanical fasteners are used, *GREEN LINK* Adhesive/Sealant should be applied around the perimeter of the base and on each screw head to prevent roof leaks caused by penetration.

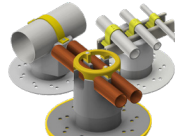
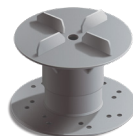
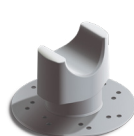
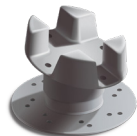
The base features 12 holes, allowing adhesive to squeeze out as the base is pressed onto the roof surface. This creates "adhesive rivets" which strengthen the bond.



KnuckleHead installations have been performing in the field for more than 10 years, with constant exposure to high temperatures, freeze-thaw cycles, UV exposure and stress, and they have shown no signs of deterioration.

***GREEN LINK* Adhesive/Sealant is environmentally safe and presents no toxic risk to contractors or building occupants.** It is solvent-free, isocyanate-free, non-flammable and odorless.

A 10-year warranty is available. Please contact *GREEN LINK* for details.



GREEN LINK
ECO-ENGINEERING

269.216.9229 | 888.672.9897 | www.greenlinkengineering.com
5519 East Cork Street, Kalamazoo, MI 49048 USA